

*imagine
if.*

Autumn 2022



**WE LIVED IN A
PLACE THAT PRIORITISED
PEOPLE OVER CARS**

MAKING CONNECTIONS

Have your say on proposals for faster, cheaper, more reliable bus services and safer cycling through the introduction of a Sustainable Travel Zone

A City Access Public Consultation

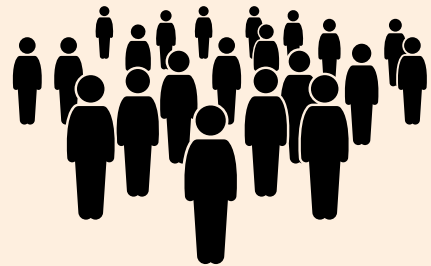


**GREATER
CAMBRIDGE
PARTNERSHIP**

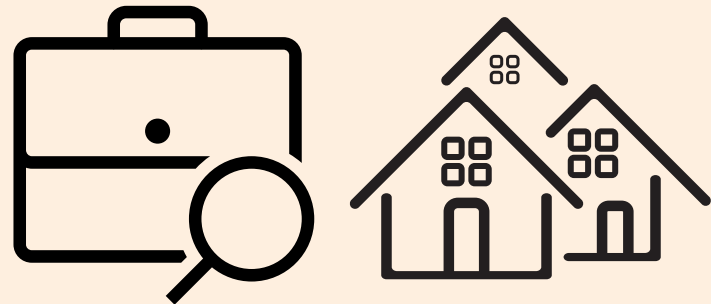


**Cambridgeshire
County Council**

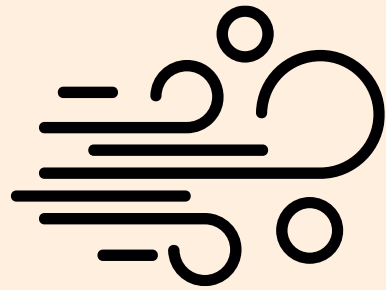
THE CHALLENGE - 8 KEY STATS



35,000 more residents in Greater Cambridge in 2021 than there were in 2011



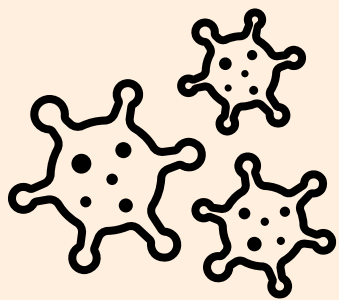
44,000 more jobs and 33,500 more homes expected by 2031



We need to reduce traffic by 15% on 2011 levels to run better public transport and reduce emissions



In 2019 there was 10% more traffic than there was ten years ago



Car use is at 92% of pre-covid levels yet bus use is only at 73%



Transport causes 45% of local carbon emissions



121 deaths in Greater Cambridge attributable to air pollution in 2020



Thousands of people living and working in Greater Cambridge have no alternative to traveling by car

INVESTMENT IN TRANSPORT



Four new busways



10,000 extra parking spaces at travel hubs



12 new Greenways & 13 cross-city cycling routes



Improved bus, walking and cycling on Histon and Milton Road



A review of Cambridge's road network classification



An integrated parking strategy



New rail connections

MAKING CONNECTIONS 2021: PUBLIC OPINION

71% Supported overall aims - reducing carbon emissions, tackling pollution and congestion

68% backed the idea of reducing traffic to improve walking and cycling options

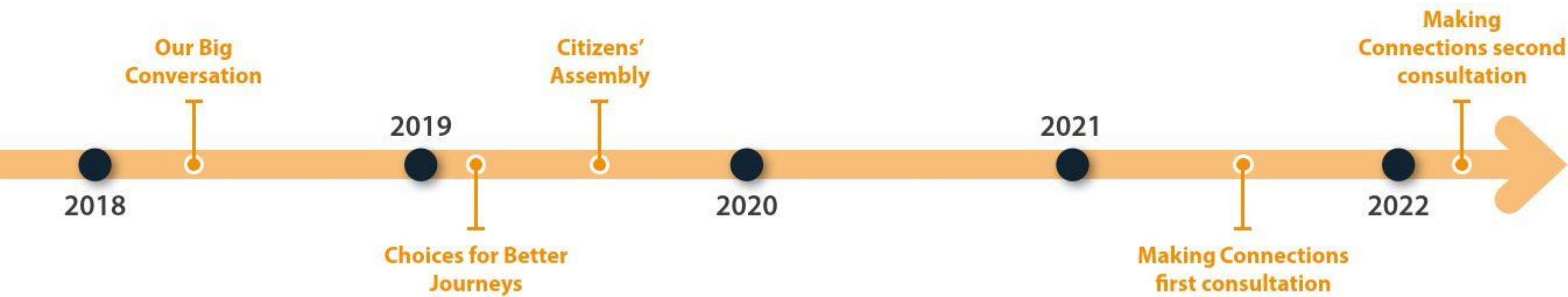
78% Supported the bus network proposals

52% supported reducing traffic to improve public spaces

Preference for flexible or pollution charges over additional or new parking charges

Preference for a lower charge covering a larger area with a small majority in favour of peak-time only charges

Preference for spending new money on more frequent bus services, cheaper fares, longer operating hours and more direct services



OUR PROPOSALS – 3 KEY ELEMENTS



1

Transform the bus network through more services to more locations, with cheaper single fares of £1/£2.

2

More investment in new sustainable travel schemes, such as better walking and cycling links.

3

A Sustainable Travel Zone in which you pay to drive. Revenue ringfenced for transport; discounts, exemptions and reimbursements available.

TRANSFORMING THE BUS NETWORK

Cheap fares and simple ticketing

Meaning more affordable and accessible travel

Higher frequency, faster services

Offering a real alternative

New routes

Doubling the size of the network connecting more people and places

More reliable journeys

Offering dependable public transport

Longer operating hours

Providing freedom to travel at more times of day

Better bus infrastructure

Safer and more pleasant journeys including tap on tap off ticketing

Demand Responsive Transport

A bookable service helping connect communities.



INVESTING IN SUSTAINABLE TRAVEL



More cycling and walking connections in the city



Extending the greenways network



More secure cycle parking



Improving our public spaces



Making our city more accessible to those with different mobility needs



Giving more people access to Car Clubs

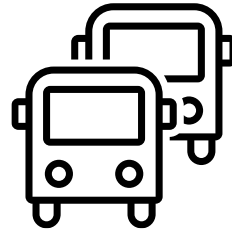
CREATING A SUSTAINABLE TRAVEL ZONE



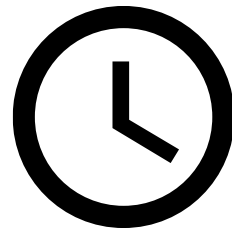
An area within which vehicles would be charged for driving in at certain times.



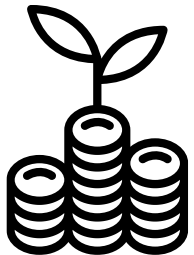
All the money raised by the charge would be invested entirely back into improving transport.



The proposed Zone would only be introduced after improvements have been made to the bus network.



Potential phased delivery of the Zone in terms of the vehicles charged and the operating hours.



£50M+ per year to invest in better, cleaner, safer transport.

2025/2026



Potential phasing-in period of the Sustainable Travel Zone. Options outlined in the consultation

2027/2028



Weekday all-day (7am-7pm) charge of £5 introduced for all vehicles (unless exempt)

PROPOSED CHARGES

The charge will only operate on weekdays from 7am-7pm .



Category	Proposed Charge Levels	
Cars	£5 per day	
Powered two-wheelers (motorbikes and mopeds)	£5 per day	
LGVs (Vans)	£10 per day	Potential to explore a 50% discount for zero emissions vehicles
Vehicles with over nine seats (includes school minibuses etc) – except coaches and buses	£10 per day	
Coaches	£50 per day	
HGVs (Lorries)	£50 per day	
Registered bus services	100% discount, potential to link to 2030 zero emission bus target	
Hackney Carriages (Taxis) and private hire vehicles	100% discount if follow Cambridge City Licensing conditions, i.e. if zero emission (from 2028), and wheelchair accessible. £5 for those not meeting this	

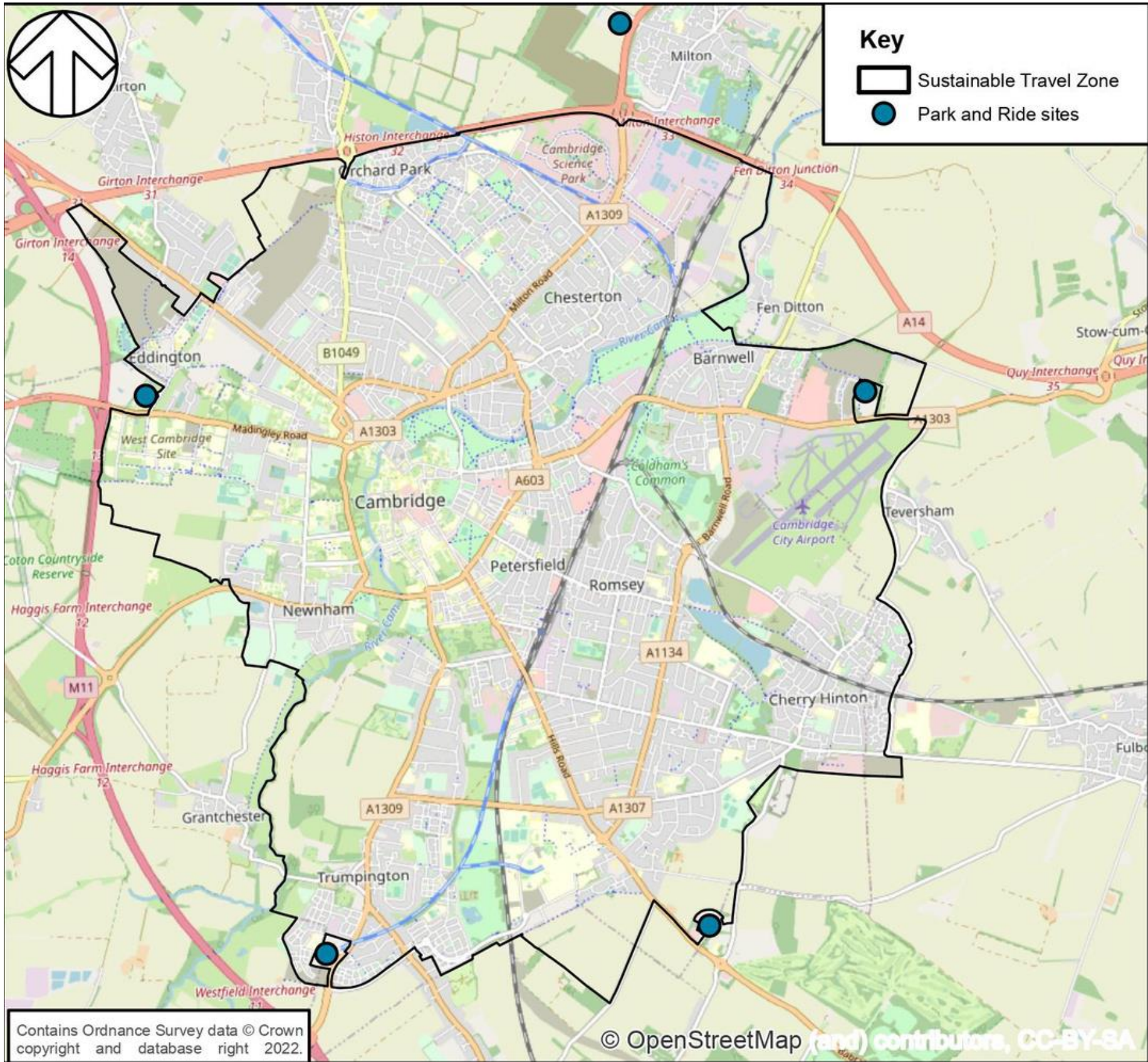
DISCOUNTS, EXEMPTIONS & REIMBURSEMENTS



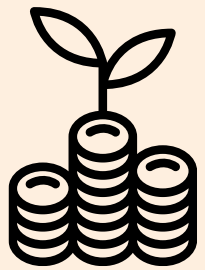
Category	Proposed discount / exemption
Emergency vehicles	Exempt
Military vehicles	Exempt
Disabled tax class vehicles	Exempt
Breakdown services	Exempt
Dial-a-ride services	Exempt
Certain local authority operational vehicles, e.g. refuse collection vehicles	Exempt
Blue badge holders	Up to two vehicles get 100% discount
People on low-incomes	Tapered discount 25-100%
Car club vehicles (official providers)	100% discount

The discounts and exemptions are supported by a reimbursement scheme targeted at NHS, social care and charities.

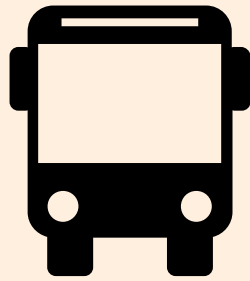
WHAT WILL THE STZ DELIVER?



Car trips reduced by 50%.



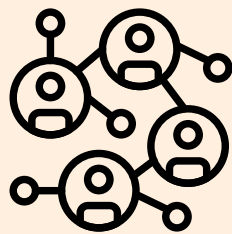
Investing £50m+ per year in better, cleaner and safer transport.



40% increase in public transport usage.

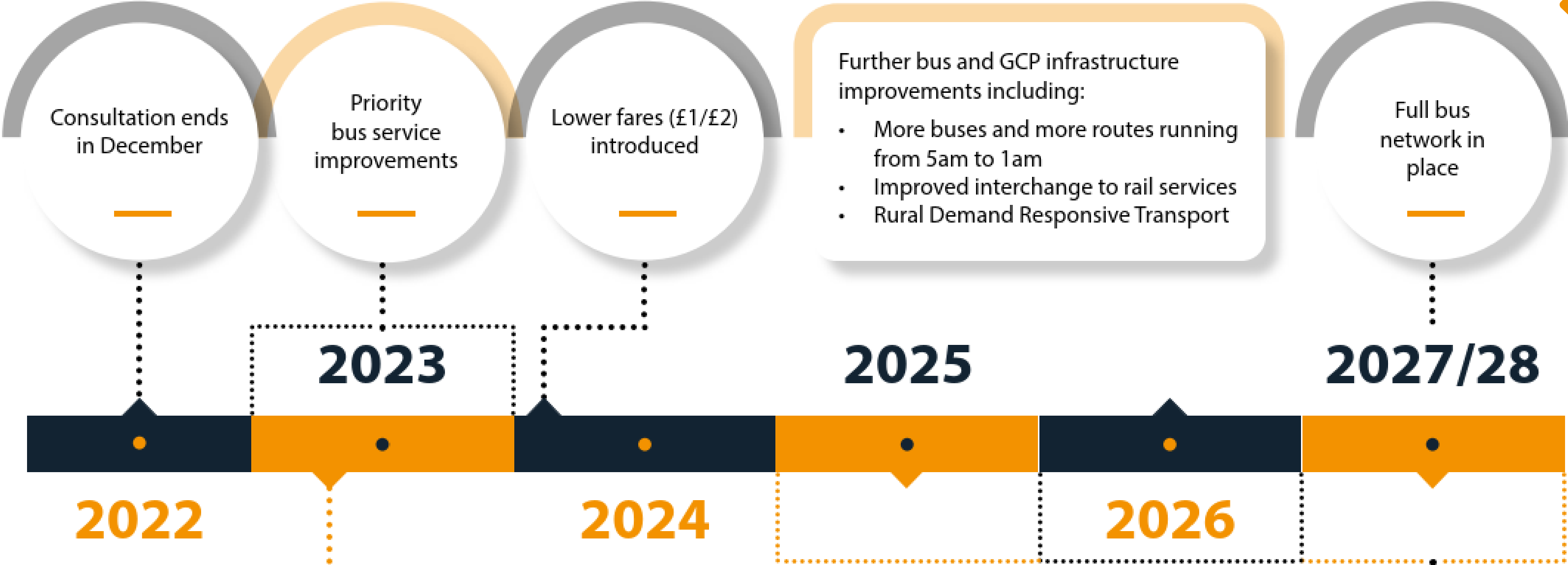


60,000 more journeys made by bike and on foot.



Funds wider measures to enhance mobility and connect people with places.

THE TIMELINE



Cambridgeshire County Council will be the key decision-making body & operator of the charging scheme.



HOW TO TAKE PART & HAVE YOUR SAY



In person

We'll be sharing information and answering questions at locations across Greater Cambridge. Find out more via www.greatercambridge.org.uk/mc-2022



Online Events

Log on to hear more and pose questions at one of our online events. Register via www.greatercambridge.org.uk/mc-2022



Online

The best way to share your feedback is by completing the short **survey online** at www.greatercambridge.org.uk/mc-2022



Read more detail on the proposals and fill out the survey online at www.greatercambridge.org.uk/mc-2022



Request a print brochure and survey for post or in alternative formats, including large print, braille and other languages by calling 01223 699906. You can also call us if you need help filling out the survey.



Printed consultation brochures are also available to view at local libraries which are listed on the link above.



facebook.com/GreaterCambs



[@GreaterCambs](https://twitter.com/GreaterCambs)
[#GCPMakingConnections](https://twitter.com/GreaterCambs)

Consultation runs until midday 23 December