

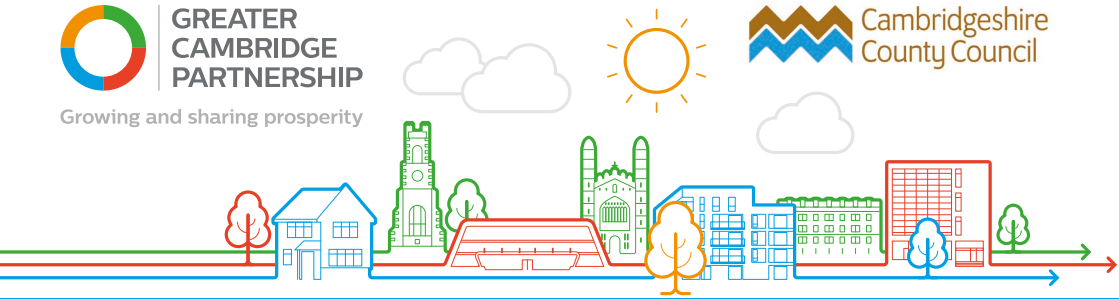


**GREATER  
CAMBRIDGE  
PARTNERSHIP**

Growing and sharing prosperity



**Cambridgeshire  
County Council**



## **GCP TRANSPORT RESPONSE TO COVID-19: TRAFFIC MANAGEMENT MEASURES NEWTOWN AREA PHASE 2 PUBLIC CONSULTATION**

### **HAVE YOUR SAY**

17 MAY – 11 JUNE 2021

#### **INTRODUCTION**

The Greater Cambridge Partnership (GCP) is working with Cambridgeshire County Council to encourage walking and cycling, and to support social distancing during the Covid-19 pandemic.

We introduced a series of experimental traffic management schemes in August 2020 including a first phase of measures in the Newtown area which closed various routes to through motorised trips. We held a public consultation for this first phase of measures in November / December 2020.

#### **THE PHASE 2 PUBLIC CONSULTATION**

A second phase of experimental measures for the Newtown area was introduced on 20 January 2021. These Phase 2 measures consist of:

- Closing a short section of Panton Street mid-way between Saxon Street and Union Road to all motor vehicles.
- Making the section of Panton Street between Saxon Street and Union Road two-way for all vehicles on either side of the road closure point.

- Permitting cyclists to use the sections of Panton Street between Saxon Street and Lensfield Road and between Russell Court and Union Road in both directions with motor vehicles still required to go one-way, northbound.
- Reversing the one-way flow in Norwich Street so that it now runs from Panton Street towards Hills Road (cycling is still be permitted in both directions).

#### **See the map on Page 2 of this leaflet for details.**

We are now holding a formal public consultation on the Newtown Phase 2 measures. This will start at noon on Monday 17 May 2021 and close at noon on Friday 11 June.

The consultation will seek your opinions on the second phase of measures introduced in the Newtown Area.

#### **TO HAVE YOUR SAY, PLEASE VISIT:**



**[www.greatercambridge.org.uk/  
etro-consultation-phase2](http://www.greatercambridge.org.uk/etro-consultation-phase2)**

We are unable to accept postal responses at this time. However, if you cannot complete the survey online, please call our Contact Centre on 01223 699906. Our staff will then record your feedback over the phone.

## GENERAL COMMENTS ABOUT AND FORMAL OBJECTIONS TO THE TRAFFIC MANAGEMENT MEASURES

During the trial period we invite people to send us their comments on these measures in the Newtown area. All comments and feedback will be given careful consideration when the experimental measures are reviewed in the autumn this year.

### FORMAL OBJECTIONS

If you would like to make a Formal Objection to the Phase 2 measures, please email us at [consultations@greatercambridge.org.uk](mailto:consultations@greatercambridge.org.uk) by no later than 7 July 2021 stating the grounds for your objection.

### FURTHER COMMENTS TO PHASE 1 / 2 MEASURES

Although the formal consultation survey runs from 17 May to 11 June, if you would like to make any further comments on any of the experimental measures in the Newtown area, please contact us via:

**Email:** [consultations@greatercambridge.org.uk](mailto:consultations@greatercambridge.org.uk)

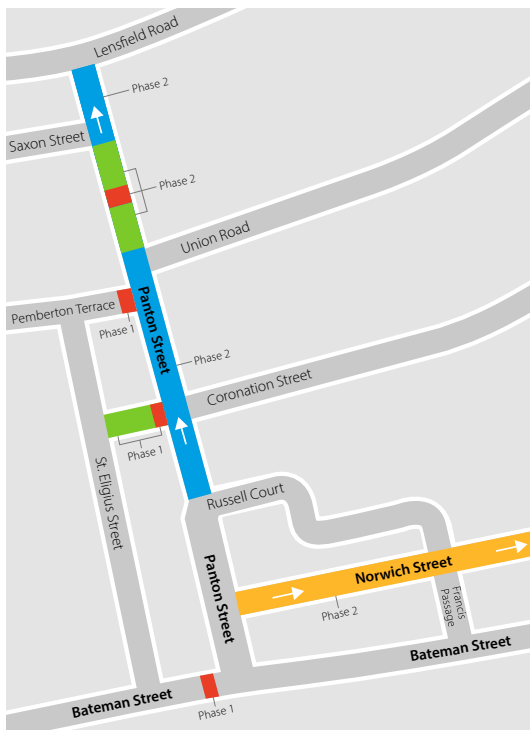
**Twitter:** [www.twitter.com/GreaterCams](https://www.twitter.com/GreaterCams)





**Facebook:** [www.facebook.com/GreaterCam](https://www.facebook.com/GreaterCam)

**Telephone:** 01223 699906

The closing date for any such further comments is also **7 July 2021**.

## MAP OF PHASE 1 AND 2 EXPERIMENTAL TRAFFIC MANAGEMENT MEASURES



-  Experimental prohibition of motor vehicles
-  Experimental two-way traffic
-  Experimental one-way for motor vehicles (cycling permitted in both directions)
-  Experimental reversal of one-way for motor vehicles (cycling permitted in both directions)

### WHERE CAN I GET MORE INFORMATION?

You can find more information on the experimental measures GCP is implementing on behalf of the County Council on our website:

[www.greatercambridge.org.uk/covid-etros](http://www.greatercambridge.org.uk/covid-etros)

If you would like to keep in touch with any updates on the experimental traffic regulation orders, please visit [www.greatercambridge.org.uk/subscribe](http://www.greatercambridge.org.uk/subscribe) to be added to our mailing list.

