



**GREATER
CAMBRIDGE
PARTNERSHIP**

Growing and sharing prosperity
— Delivering our City Deal —

West Of Cambridge

GCP workshop meeting for:

Cambridge South West Travel Hub

Tim Watkins
September 2019



Agenda

- GCP Decision
- Continued dialogue
- Design evolution
- Feedback received
- Further engagement
- Planning process
- Programme
- Q&A

GCP Decision June 2019

- a) Note the findings of the recent public consultation;
- b) Endorse the recommendation to develop a new site and associated infrastructure necessary for access to the site west of the M11;
- c) Approve the preparation and submission of a planning application for the recommended scheme at the new site to the West of the M11 and associated access infrastructure, including continued dialogue with local communities and further work to mitigate the local impacts of the scheme.
- d) Approve the negotiation of land and rights required for the early delivery of the scheme including Compulsory Purchase and Side Road Orders as appropriate; and
- e) Agree that the Trumpington Road / Hauxton Road improvements be removed from the project scope to form a separate, new project.

Continued dialogue

Continued dialogue with local communities in preparation of a planning application for the recommended scheme at the new site to the West of the M11 and associated access infrastructure, to mitigate the local impacts of the scheme.

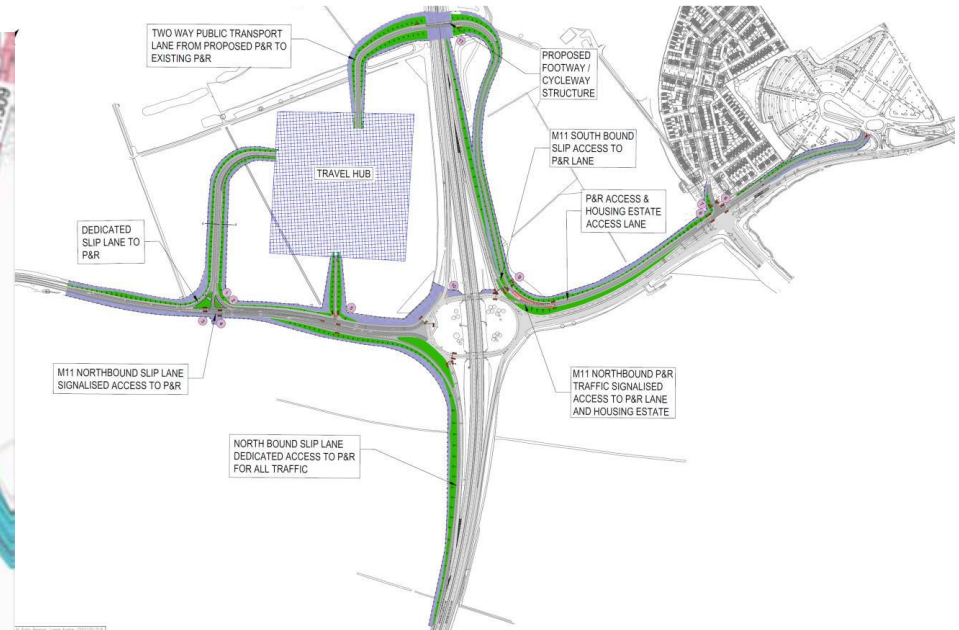


Design

Public consultation 2018



27th June 2019



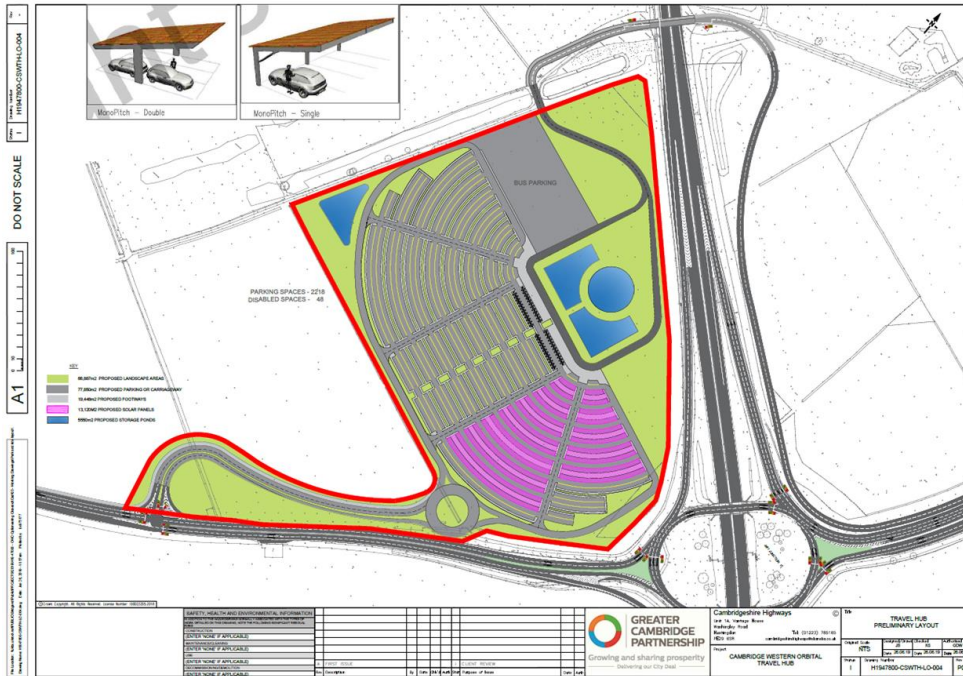
Design – Access



Design – PV Panels

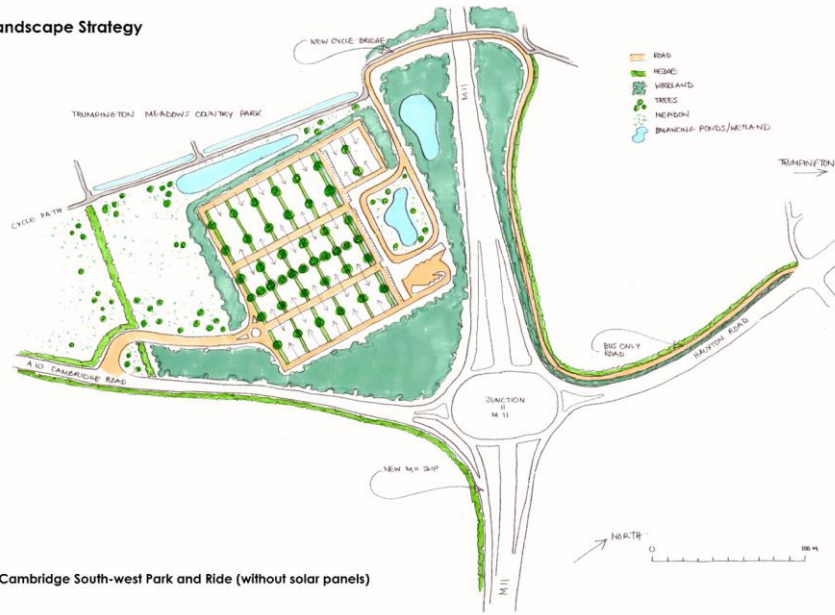


Design – PV Panels



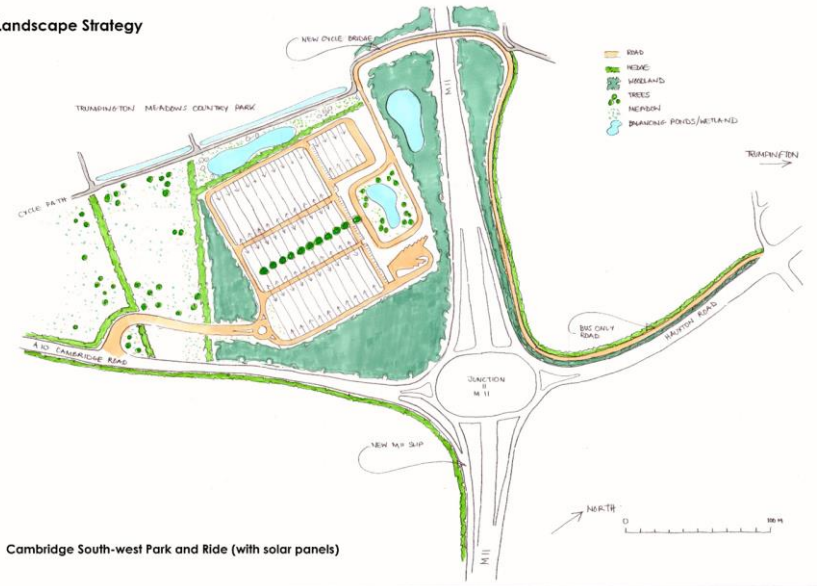
Design – Landscape

Landscape Strategy



Cambridge South-west Park and Ride (without solar panels)

Landscape Strategy



Cambridge South-west Park and Ride (with solar panels)

Design – Access, Landscape & PV's



Design – further refinement

- Landscaping
- PV charging
- Building
- Cycle access and storage
- Materials
- Drainage
- Waiting areas
- Amenity areas / outdoor classrooms
- Other



Further engagement

- Community events
- EIA process
- Formal pre application process with LPA
- Statutory Stakeholders (e.g. Highways England)
- **Statutory planning consultation**



Next Steps

The programme of works shows the further development of the preferred option working with statutory stakeholders such as Highways England and the Local Planning Authority towards submitting a planning application in late 2019:

Activity	Target completion date *Subject to statutory permissions, CPO & PI
Final Option recommendation to GCP Executive Board	June 2019
Detailed design and other preparatory tasks for planning process	2019 - 2020
Apply for relevant planning powers to construct*	December 2019 /2020
Scheme completion*	2021



Questions?

The problem

- Delays at J11 of the M11 in peaks
- Park and Ride demand exceeding capacity
- Growth in the area creating additional demand

Growth Scenario	Number of P&R spaces needed at J11		
	2021	2026	2031
Medium	1825	2049	2274
High	2194	3034	3874

