



The mature trees and intermittent hedgerow along the A10 Cambridge Road will be retained as far as possible to preserve the tree-lined approach to Foxton and screen the travel hub. The pedestrian /cycle route along the A10 will also be retained, apart from a slight detour to cross the entrance to the travel hub. The travel hub site lies over the line of two Roman roads and the car park layout marks these with tree-lined pedestrian routes. The Melbourn Greenway cycle route will continue along the A10, but there will also be a shared cycle/pedestrian route through the site between the new road junction at the southern end and the new pedestrian entrance at the northern end. The site will be largely screened from the surrounding landscape by a wide tree and shrub belt. This will include a mix of native species, with lower growing woodland edge species along the railway line and under the overhead power line (Network Rail and National Grid requirements). A gap in the screen planting will allow views along the main SW/NE pedestrian route toward the landscape and the site of the former Roman settlement to the south.

There will be an area of public realm at the northern end of the site with trees, toilets, cycle parking, seating and disabled parking bays. Around 60% of the parking spaces in the travel hub will be covered by solar panels, precluding tree planting in these areas. A crushed gravel track along perimeter of the car park will provide an off-road route for horses and riders and a cycle route to secure cycle boxes within the retained listed building.

- 1 Parking with solar panels above
- 2 A10 Cambridge Road
- 3 Disabled parking bays and cycle parking
- 4 Toilets and waiting area
- 5 Great Northern railway line
- 6 Woodland walk
- 7 Shared use track for equestrian and cycles
- 8 Existing retained trees
- 9 Melbourn Greenway
- 10 Bus stop
- 11 Listed building (retained)

Suggested tree species for car park:
Quercus robur
Acer campestre
Prunus avium
Ulmus minor Dehesa de Amani
Alnus glutinosa

Suggested tree species outside of car park:
Quercus robur
Acer campestre
Prunus avium
Alnus glutinosa
Tilia cordata
Carpinus betulus

Suggested species for woodland edge / scrub mix:
Prunus spinosa
Crataegus monogyna
Rhamnus cathartica
Rosa canina
Ligustrum vulgare
Malus sylvestris
Acer campestre

Suggested species for woodland mix:
Quercus robur
Tilia platyphyllos
Acer campestre
Corylus avellana
Betula pendula
Salix caprea
Malus sylvestris
Prunus avium plena

Suggested species for species rich hedgerow:
Prunus spinosa
Crataegus monogyna
Rhamnus cathartica
Cornus sanguinea
Viburnum lantana
Euonymus europaeus
Rosa canina
Ligustrum vulgare

Suggested species for native hedgerow:
Rhamnus cathartica
Cornus sanguinea
Viburnum lantana
Euonymus europaeus
Rosa canina
Ligustrum vulgare

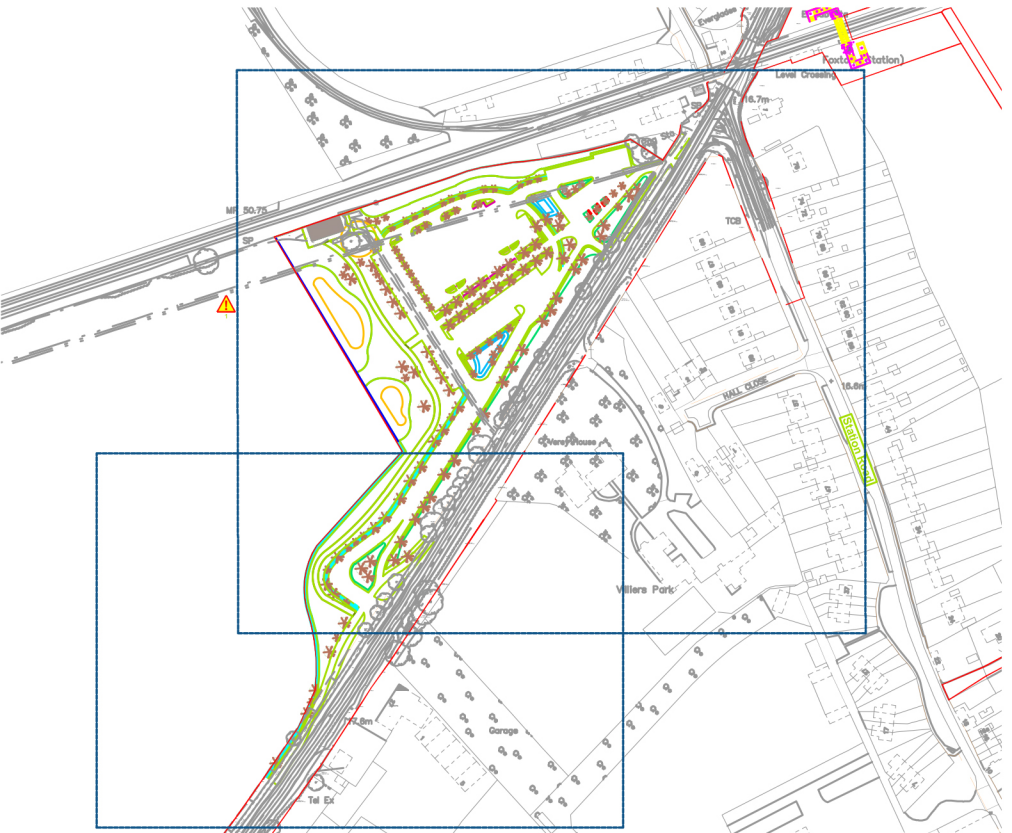
Notes

1) Do not scale from this drawing

Key to symbols

- Redline boundary
- Native species woodland mix
- Woodland edge / scrub
- Wildflower meadow mix
- Crushed gravel equestrian track
- Damp grassland meadow mix
- Species rich hedgerow, maintained 1-2years (around main access spine)
- Native species hedgerow, regularly maintained (internal)
- Large trees
- Small trees
- Roads
- Pedestrian paths
- Solar panel parking
- Pedestrian paths

Reference drawings



P1	05.11.21	FC	First draft for comment	JM	KG
Rev	Date	Drawn	Description	Ch'k'd	App'd

MOTT MACDONALD

22 Station Road
Cambridge
CB1 2JD
United Kingdom

T +44 (0)1223 463500
F +44 (0)1223 461007
W mottmac.com

Client
Greater Cambridge Partnership

Title
**Foxton Travel Hub
Landscape Masterplan**

Designed	F Churchyard	FC	Eng check	F Lastname	
Drawn	F Churchyard	FC	Coordination	K Gareau	KG
Dwg check	J Morrison	JM	Approved	K Gareau	KG
Scale at A1	Status	PRE	Rev	P1	Security
Varies					STD

mber
41836-MMD-GIS-XX-DR-NV-0004