



WEST CAMBRIDGE

City Deal Local Forum
14 June 2016

A world-class, well-connected, research & development site, that benefits Cambridge, the Region and UK

High quality environment

High standards in social & environmental sustainability



West Cambridge Vision: 2030+ with NWC



1: To optimise the amount of development on the site, to help enhance the position of the City and Region as a world leader in Research and Development



2: To support the commercialisation of knowledge through entrepreneurship and collaborations with industry



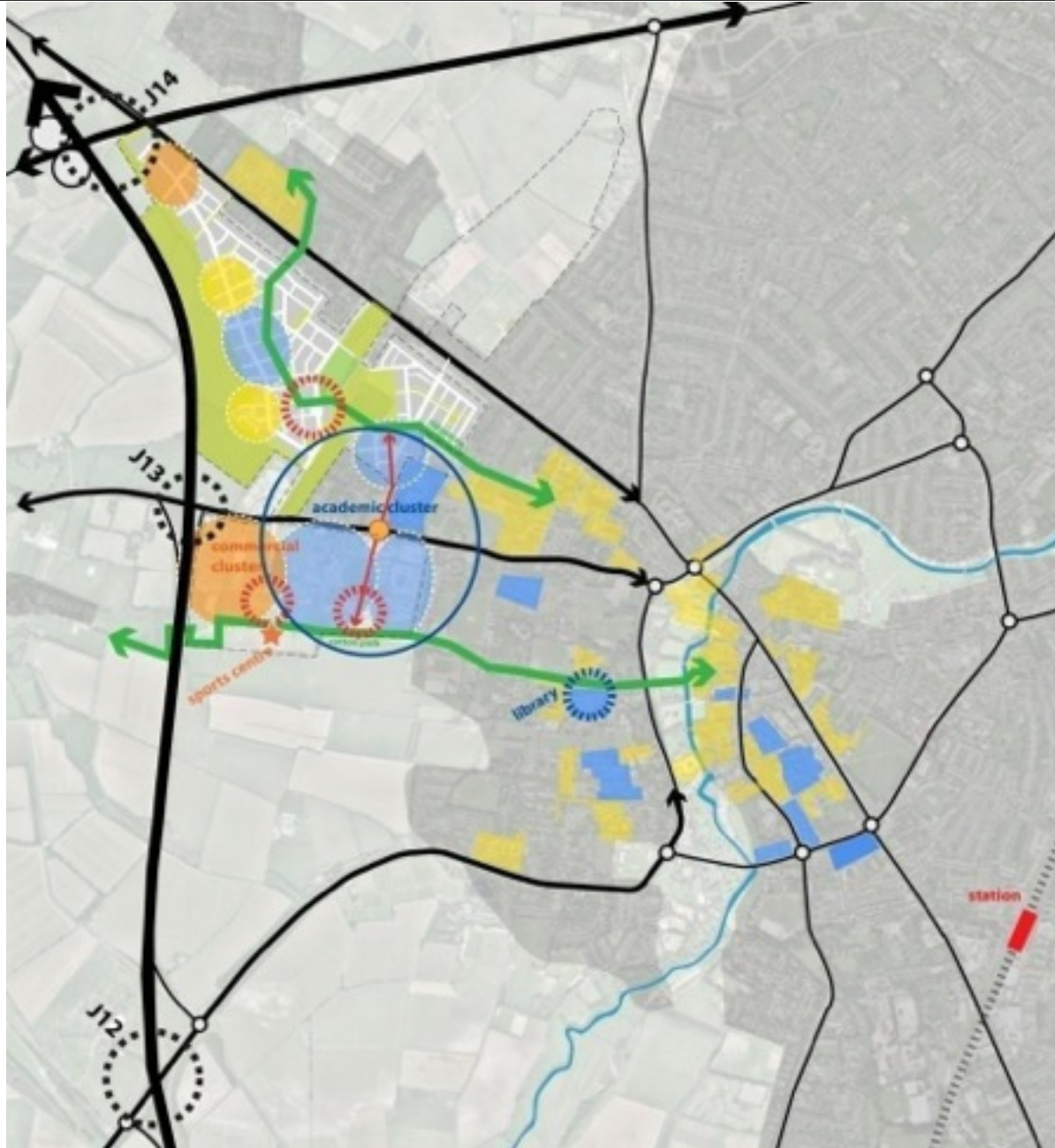
3: To create and sustain a high quality place by transforming the physical and social environment for site users and neighbours



4: To create flexible and efficient space to support viability and long-term value creation



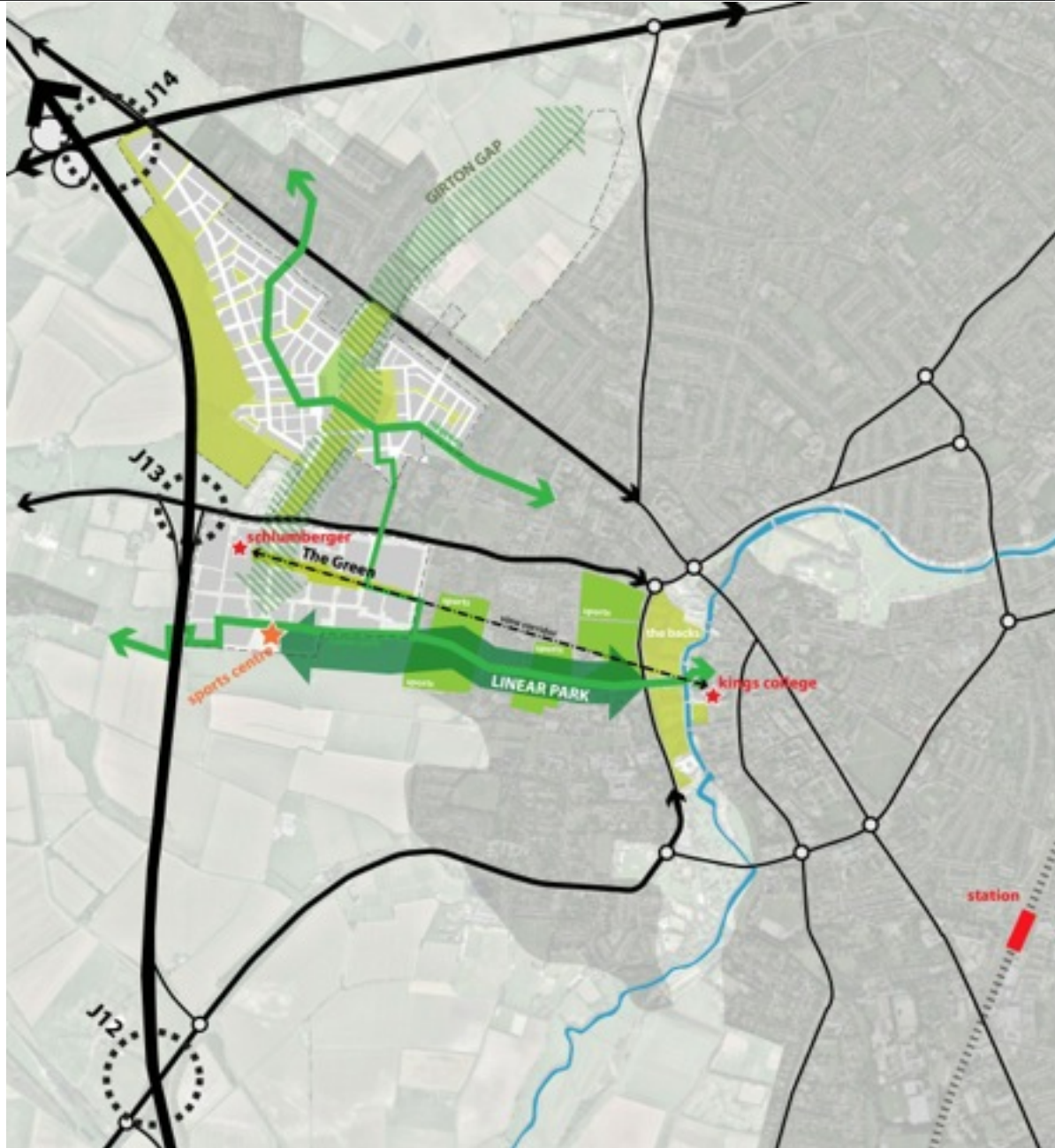
5: To deliver sustainable development by proactively investing in the quality of the estate and its integration within the City



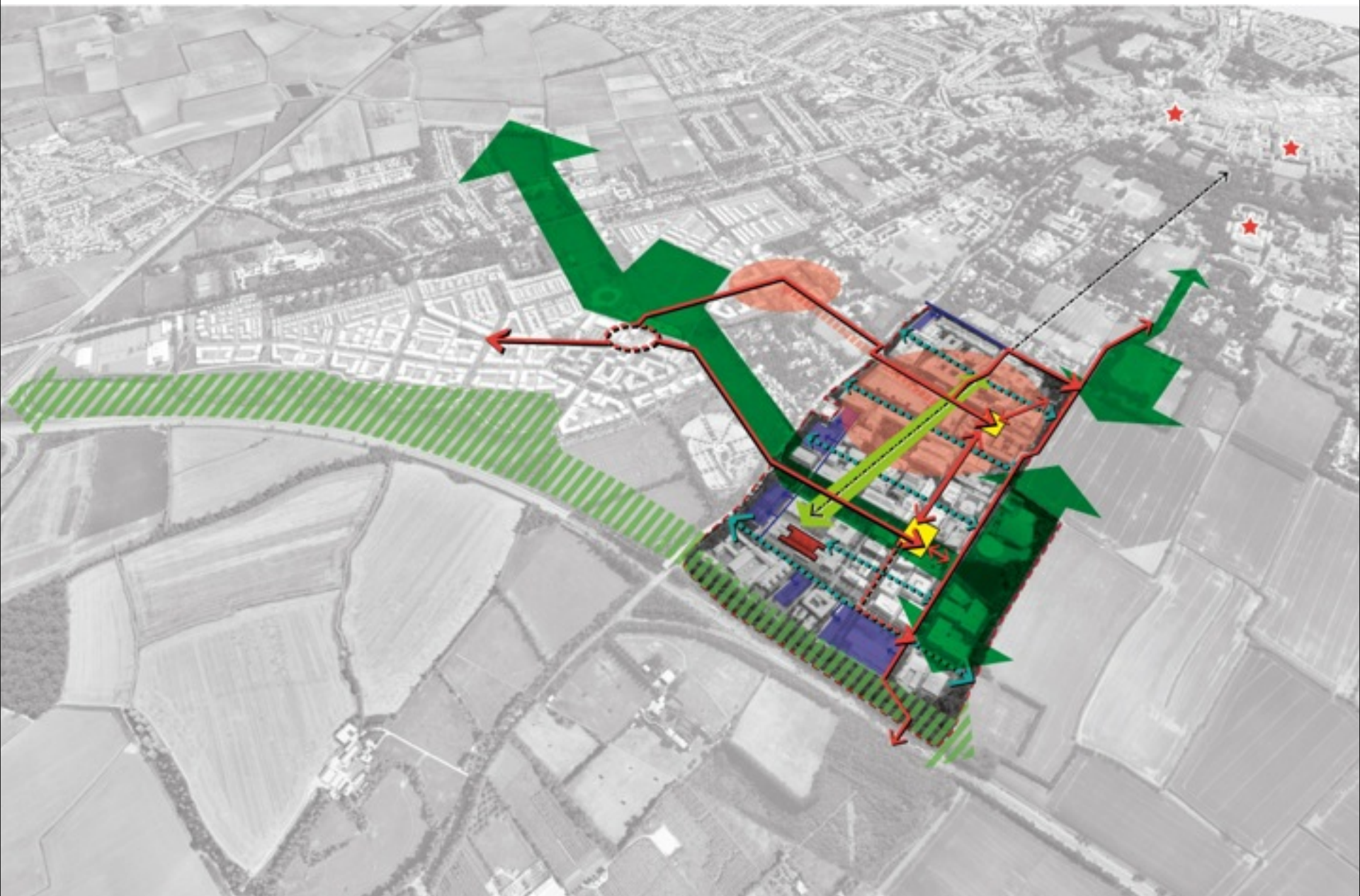
Academic and commercial research clusters



Enhance connectivity



Optimise development potential and long term value for the City and the University



Transforming place – responding to context, critical mass and sorting out the parking



Phased evolution – Connectivity, Community, Character & Climate



Existing 2015



Existing Site (2015)



1999 Planning Consent



Phase 1: Priority Projects – Connectivity and transforming access



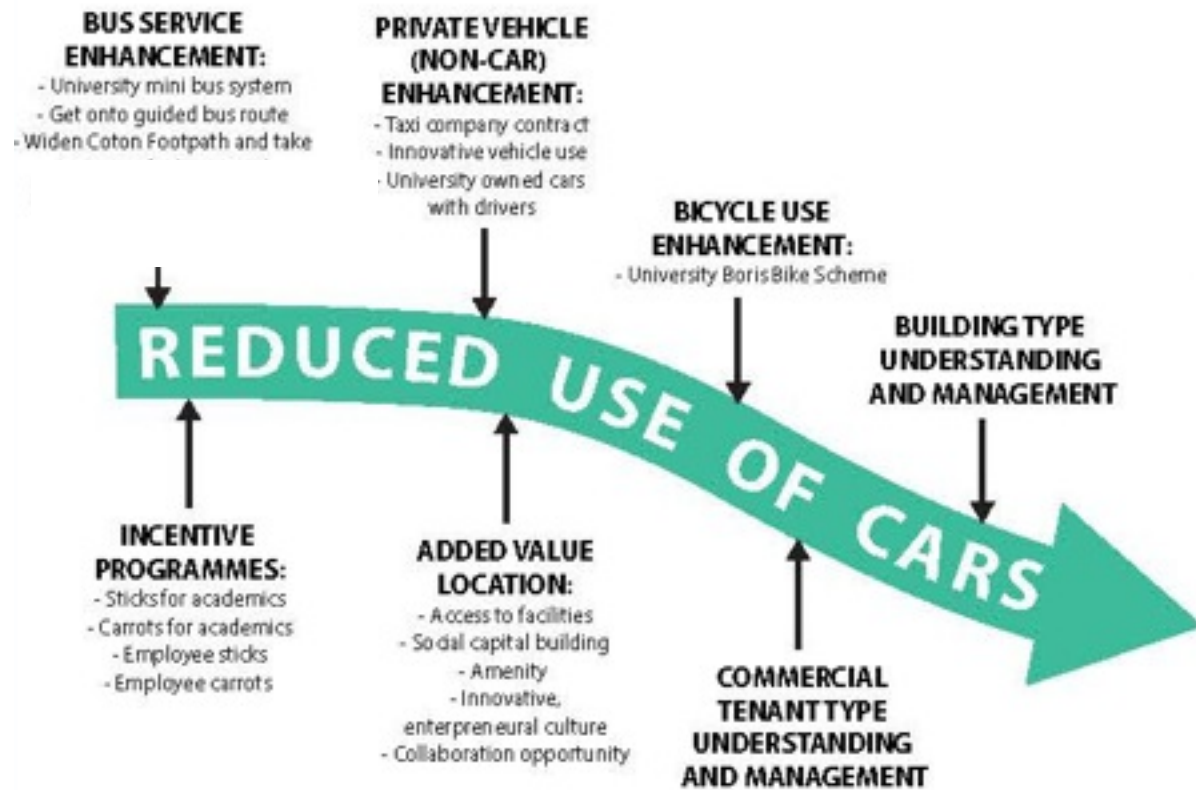
Phase 2: Interim Condition – building capacity



Phase 3: Transformation at full capacity

	Academic [m2]	Commercial [m2]	TOTAL GEA [m2]
Existing (2015)	102,909	40,386	164,550
Proposed Phase 1 Priority Projects	91,250	52,000	149,300
TOTAL (2021)	167,159	92,386	284,310
Proposed total	202,500 to 320,500	52,000 to 170,000	383,300
Existing retained and proposed total	261,059 to 379,059	92,386 to 210,386	500,280

Illustrative Masterplan Capacity



Aspirations for West Cambridge's transport strategy:

- reduce reliance on the private car**
- provide lower levels of parking and offer local management**
- promote extensive travel planning**
- encourage involvement in travel behaviour change initiatives**
- mitigate local highway impacts**
- promote walking and cycling**
- deliver enhanced Public Transport provision and lead on area-wide improvements**

West Cambridge being brought forward with:

- **A14 Huntingdon – Cambridge – reported in May**
- **HE's need to review the M11 capacity – unlikely to report in 2016**
- **City Deal – details emerging**
- **HE's proposals for the East - West**

Whilst City Deal will enhance connectivity to West Cambridge, West Cambridge is not dependent upon its delivery.

“An incremental approach to technical assessment of development and transport mitigation”:

- **assess an initial first phase and identify mitigation;**
- **use planning conditions so that later phases will be the subject of further assessments;**
- **Full Development mitigation to be defined later;**
- **assess the environmental impact for the full scheme.**

This enables a consent for the whole scheme.

Emerging Public Transport Strategy

Aspirations are:

- to provide a good non-car alternative for mid- and long-distance movements based on where people live**
- service to reflect demand and journey purpose**
- to provide good links to popular destinations both within the City and outside**
- to provide a service to reflect the respective delivery of West Cambridge**

Emerging Public Transport Strategy

Key:

- Key Highway Network
- Railway
- Railway Station
- Addenbrooke's Hospital
- Built Up Area
- Town Centre
- New and Future Developments
- Future Aspirational Developments
- West Cambridge Development



- Increase frequency of Uni4 service, to/ from Cambridge Rail Station
- Review frequency of Orbital service between WC/Chesterton Station, extend to CBC
- Services to/from Guided Busway



2030 Vision - West & North West Cambridge



Transforming place - West & North West Cambridge 2030+



WEST CAMBRIDGE

City Deal Local Forum
14 June 2016