

## TRANSPORT

We will improve the infrastructure, ease congestion and offer alternative, reliable travel options, making it easier for people to travel by public transport, cycle or on foot to their destination.

## SKILLS

We will help young people secure the skills they need to succeed in Cambridge's 21st century economy and create job opportunities.

## HOUSING

We will accelerate the supply of new homes and create more affordable housing in sustainable locations in Cambridge and South Cambridgeshire, maintaining Cambridge as a compact city.

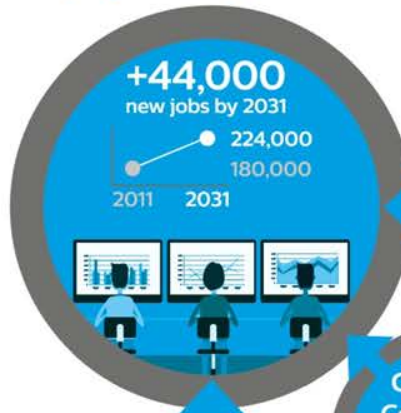
## INNOVATION

We will work with experts from business and universities to make sure new technologies help us solve problems and improve people's quality of life.

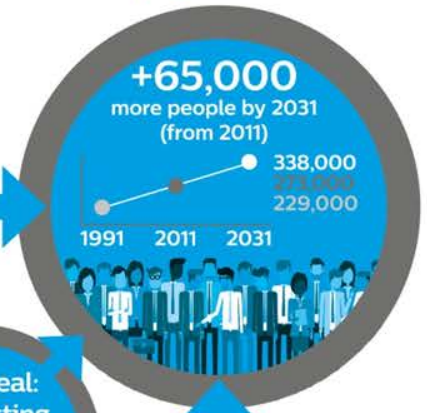


# Supporting sustainable economic growth in Cambridge and South Cambridgeshire

An increase in employment opportunities



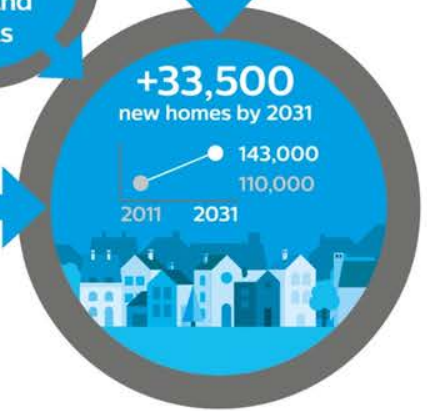
Rapidly increasing population



City Deal:  
Connecting  
people, homes,  
jobs and  
ideas



+25,000 trips in and out of Cambridge by 2031



The need for 33,500 more homes by 2031




# Greater Cambridge City Deal - objectives

- Investing in sustainable transport to tackle congestion and improve transport flow
- Building housing and affordable homes, facilitating delivery of the two Local Plans
- Sharing prosperity by developing our people
- Investing in technology to improve the liveability of our great small city
- Protecting our unique quality of life
- Creating conditions for continued economic and jobs growth

# The Transport Challenge

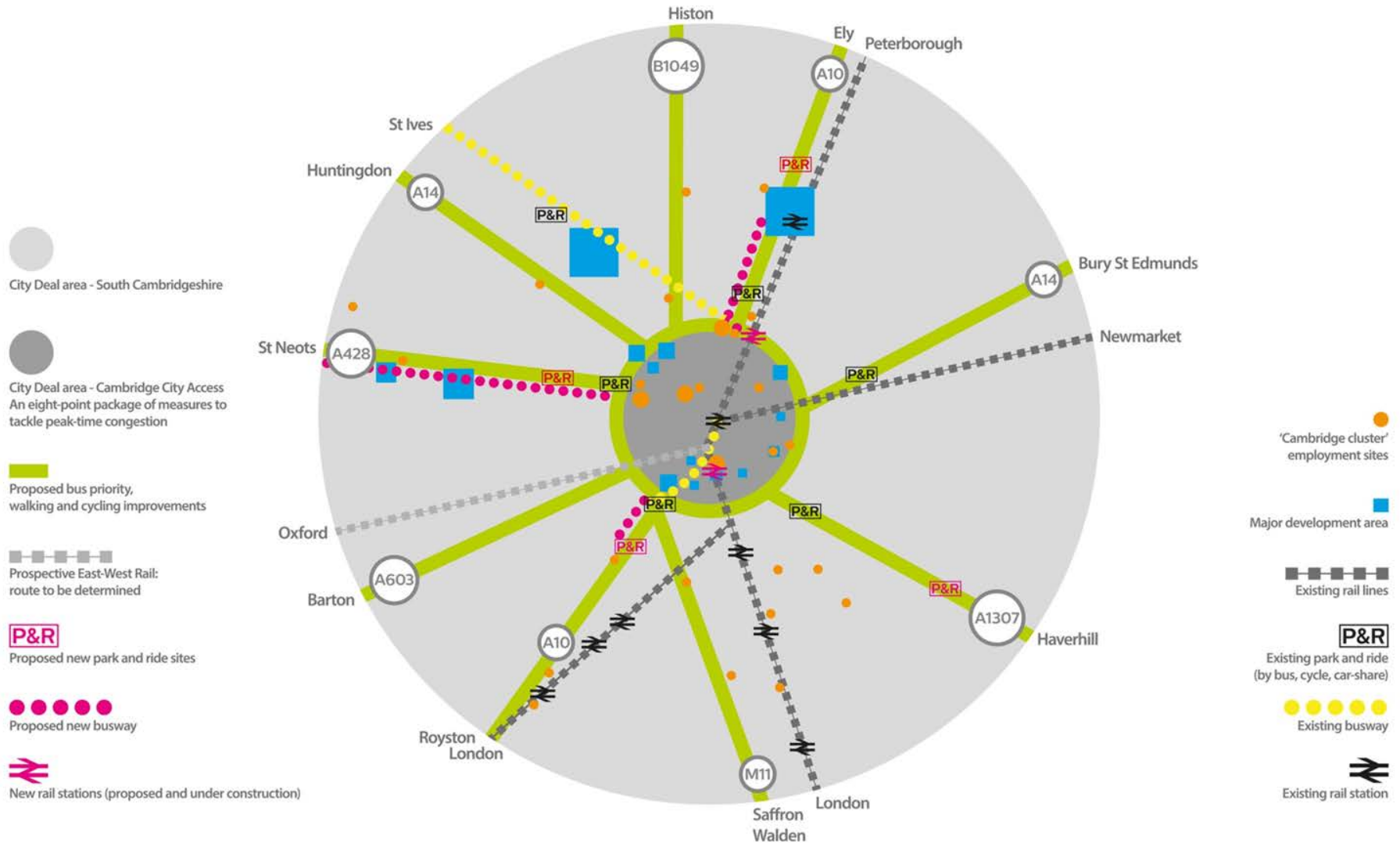


**If we carry on as we are by 2031**



- Traffic in Cambridge will increase by over 30% in the morning peak.
- Traffic in South Cambridgeshire will increase by almost 40% in the morning peak.
- The time spent in congestion will more than double.

# It should be easy to get into, out of and around Cambridge by public transport, bike or on foot



# Principles for improved transport network



## Better bus journeys

- Bus priority measures for reliable trips
- **New, more frequent and extended services**
- Orbital trips around the city, offering more choice



## Access to rail:

- New stations: Cambridge North (2017) and Cambridge South (under development)
- **East-West Rail connecting Oxford - Milton Keynes - Cambridge (under development)**
- Support for improved services, capacity and facilities



## Safer, easier cycling:

- Comprehensive city and rural cycle network
  - **High quality cycleways**
  - More off-road routes
  - **Cycle parking and facilities**



## Safer, pleasant walking:

- Safe and pedestrian-friendly streets



## Tackling congestion:

- Reduce and maintain peak-time traffic in the city by 10-15% (2011 baseline)



## Smart travel

- Intelligent mobility
  - **Travel planning**



## Transport interchange:

- More and better transport hubs with more Park & Ride capacity



## People-friendly places:

- Improved public spaces
- **Better air quality, less traffic**
- Protecting the environment
  - **More off-road routes**

# The City Deal Partnership



- Multi-agency public-private-academic sector partnership
- Reflects unique Greater Cambridge economy
- Three local authorities
  - Cambridgeshire County Council
  - Cambridge City Council
  - South Cambridgeshire District Council
- Local Enterprise Partnership
- University of Cambridge



# Governance structure

Executive Board (decision-makers) x5



Joint Assembly (scrutiny and advice) x 15

3 representatives from each council, local business and academia

Stakeholders