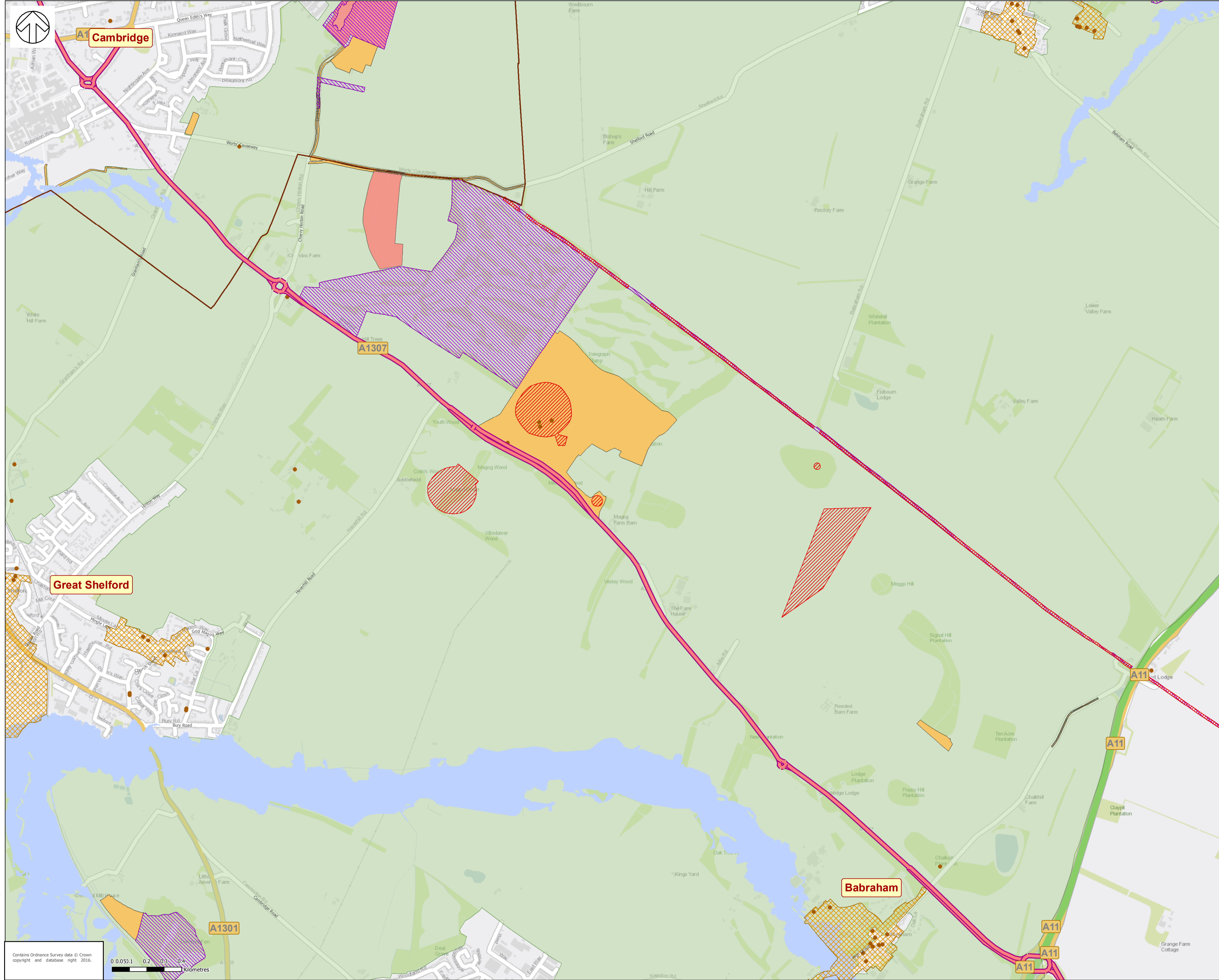


Drawn By: UKSML004

File: Q:\WSP_UK\WSP_D\Cambridge\DP\SM\A1307\A1307 - Insert 1.mxd



DO NOT SCALE

Key

- A1307
- Listed Buildings
- Conservation Areas
- District Boundary
- Scheduled Monument
- Sites of Special Scientific Interest
- Special Protection Areas
- Special Areas of Conservation
- Parks and Gardens
- Local Nature Reserves
- Flood Zones 2 and 3
- Wildlife Sites
- Greenbelt

DRAWING STATUS: DRAFT



Enter Office Address
 Tel: +44 (0)xxx
 Fax: +44 (0)xxx
 Website: www.wspgroup.co.uk

CLIENT: CAMBRIDGESHIRE COUNTY COUNCIL

ARCHITECT: N/A

PROJECT: A1307 HAVERHILL TO CAMBRIDGE CORRIDOR

TITLE: CONSTRAINTS MAP - INSERT 1

SCALE @ A1: 1:10,000	CHECKED: DP	APPROVED: AH	
CAD FILE: N/A	DESIGN/DRAWN: SML	DATE: 26/05/2016	
PROJECT No: 70012014	DRAWING No: CM - 002	REV:	

© WSP Global Inc

Contains Ordnance Survey data © Crown copyright and database right 2016.

