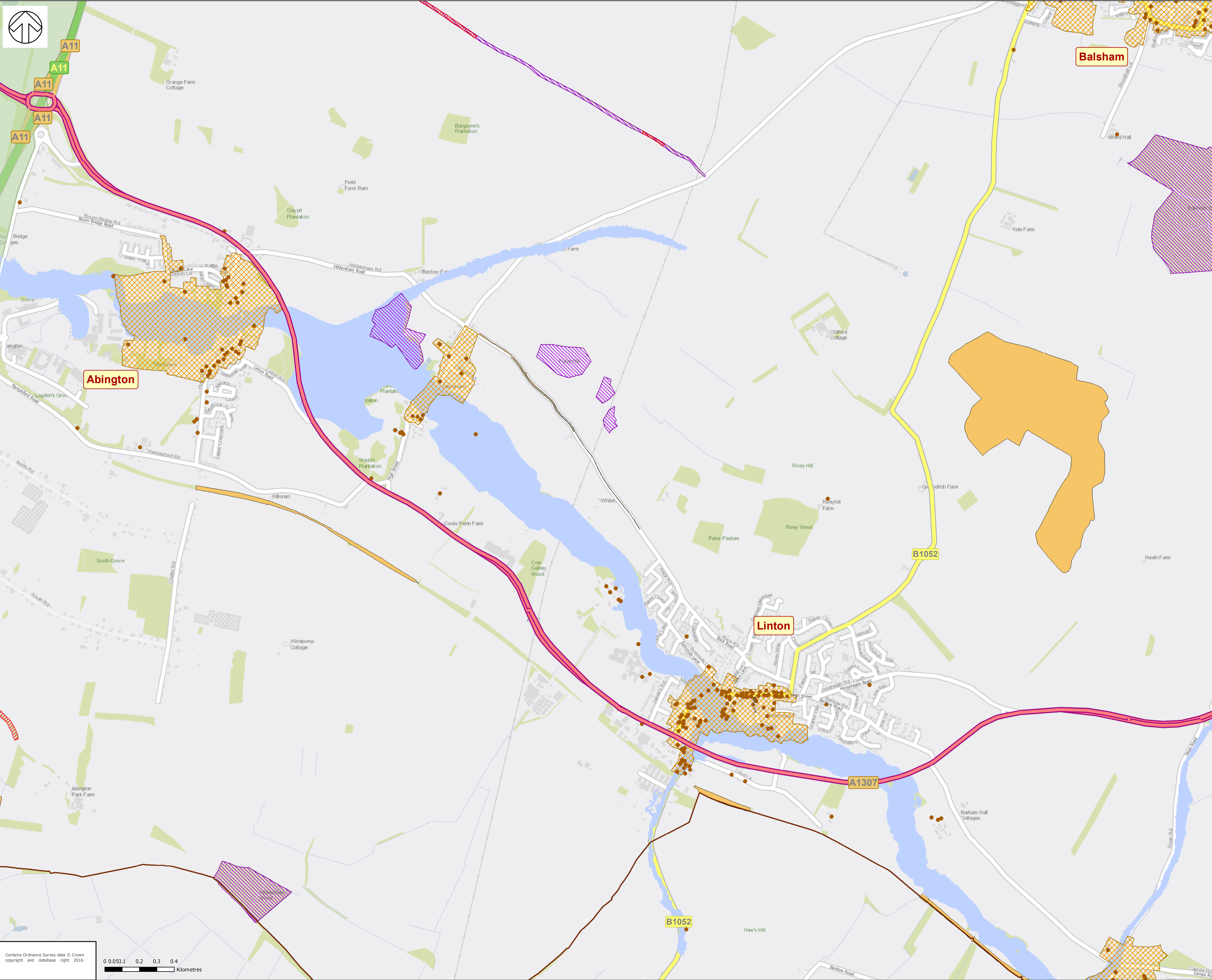


Drawn By: UKSML004



DO NOT SCALE

- Key**
- A1307
 - Listed Buildings
 - Conservation Areas
 - District Boundary
 - Scheduled Monument
 - Sites of Special Scientific Interest
 - Special Protection Areas
 - Special Areas of Conservation
 - Parks and Gardens
 - Local Nature Reserves
 - Flood Zones 2 and 3
 - Wildlife Sites
 - Greenbelt

DRAWING STATUS: DRAFT

WSP | **PARSONS BRINCKERHOFF**

Enter Office Address
Tel: +44 (0)xxx
Fax: +44 (0)xxx
Website: www.wspgroup.co.uk

CLIENT: CAMBRIDGESHIRE COUNTY COUNCIL

ARCHITECT: N/A

PROJECT: A1307 HAVERHILL TO CAMBRIDGE CORRIDOR

TITLE: CONSTRAINTS MAP - INSERT 2

SCALE @ A1:	1:10,000	CHECKED:	DP	APPROVED:	AH
CAD FILE:	N/A	DESIGN/DRAWN:	SML	DATE:	26/05/2016
PROJECT No:	70012014	DRAWING No:	CM - 003	REV:	

© WSP Global Inc

File: Q:\WSP_UK\WSP_D\Cambridge\DP\SM\A1307\A1307 - Insert 2.mxd

Contains Ordnance Survey data © Crown copyright and database right 2016.