

REPORT N° 70012014-2016-04

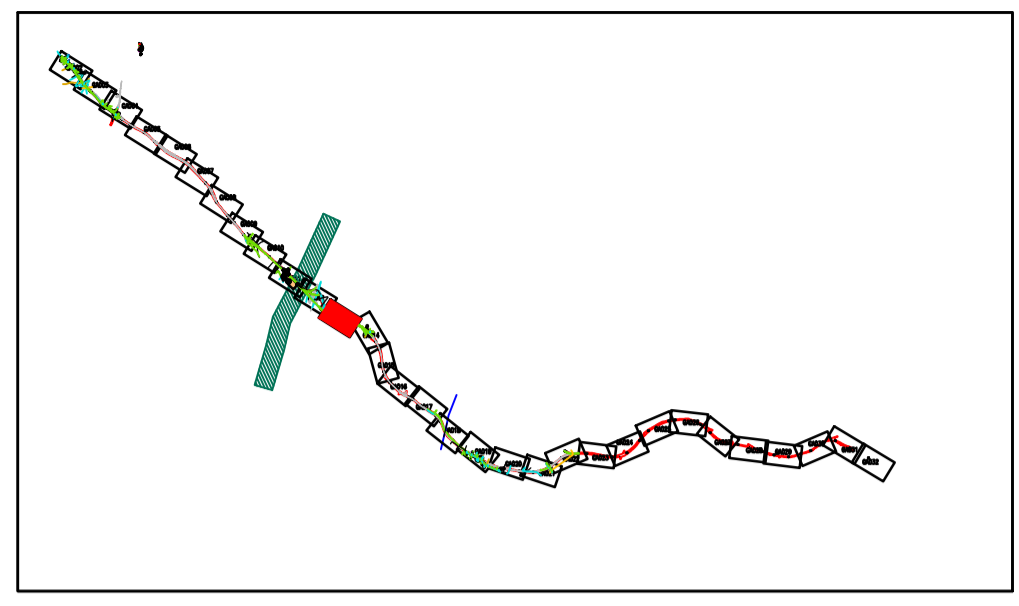
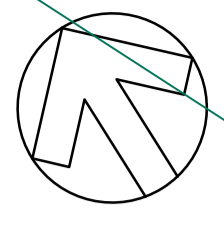
A1307 HAVERHILL TO CAMBRIDGE

PREFERRED OPTIONS REPORT APPENDICES

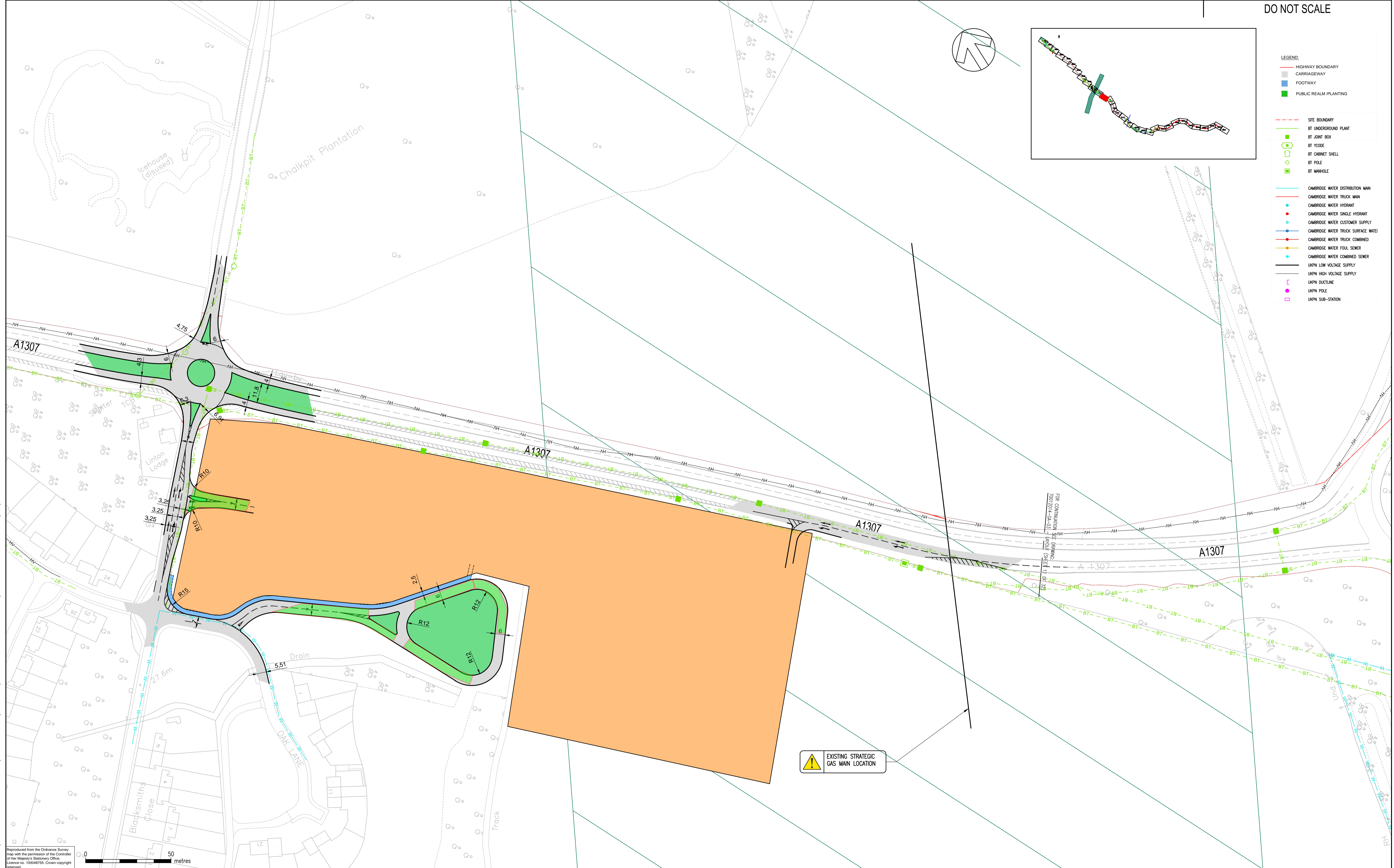
FEBRUARY 2017

APPENDIX B

DO NOT SCALE



- LEGEND:**
- HIGHWAY BOUNDARY
 - CARRIAGEWAY
 - FOOTWAY
 - PUBLIC REALM/PLANTING
-
- - - SITE BOUNDARY
 - BT UNDERGROUND PLANT
 - BT JOINT BOX
 - BT YOCDE
 - BT CABINET SHELL
 - BT POLE
 - BT MANHOLE
-
- CAMBRIDGE WATER DISTRIBUTION MAIN
 - CAMBRIDGE WATER TRUCK MAIN
 - CAMBRIDGE WATER HYDRANT
 - CAMBRIDGE WATER SINGLE HYDRANT
 - CAMBRIDGE WATER CUSTOMER SURFACE WATER
 - CAMBRIDGE WATER TRUCK SURFACE WATER
 - CAMBRIDGE WATER FOUL SEWER
 - CAMBRIDGE WATER COMBINED SEWER
 - UKPN LOW VOLTAGE SUPPLY
 - UKPN HIGH VOLTAGE SUPPLY
 - UKPN DUCTLINE
 - UKPN POLE
 - UKPN SUB-STATION



L:\70012014 - HAVERHILL CORRIDOR MODELS AND DRAWINGS\DEVELOPMENT\AUTOCAD\GA GENERAL ARRANGEMENT\2014-GA-GP-03.DWG 16/12/2016 17:50:12 Malecki, Artur

Reproduced from the Ordnance Survey map with the permission of the Controller of Her Majesty's Stationery Office. Licence no. 100048755. Crown copyright reserved.



REV	DATE	BY	DESCRIPTION	CHK	APP
A	08/12/2016	MW	FIRST ISSUE	AKM	SP

DRAWING STATUS: FOR INFORMATION ONLY

WSP | PARSONS BRINCKERHOFF

Newnham House, Cambridge Business Park, Cambridge CB4 0WZ
 Tel: +44 (0)1223 436 600 Fax: +44 (0)1223 436 601
 www.wspgroup.com www.pbworld.com

CLIENT: **Cambridgeshire County Council**

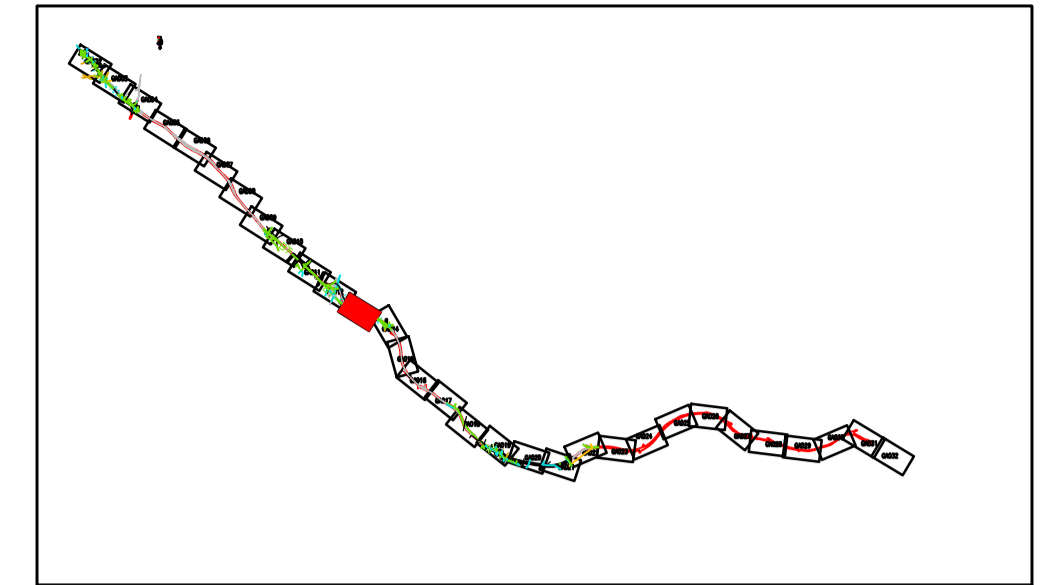
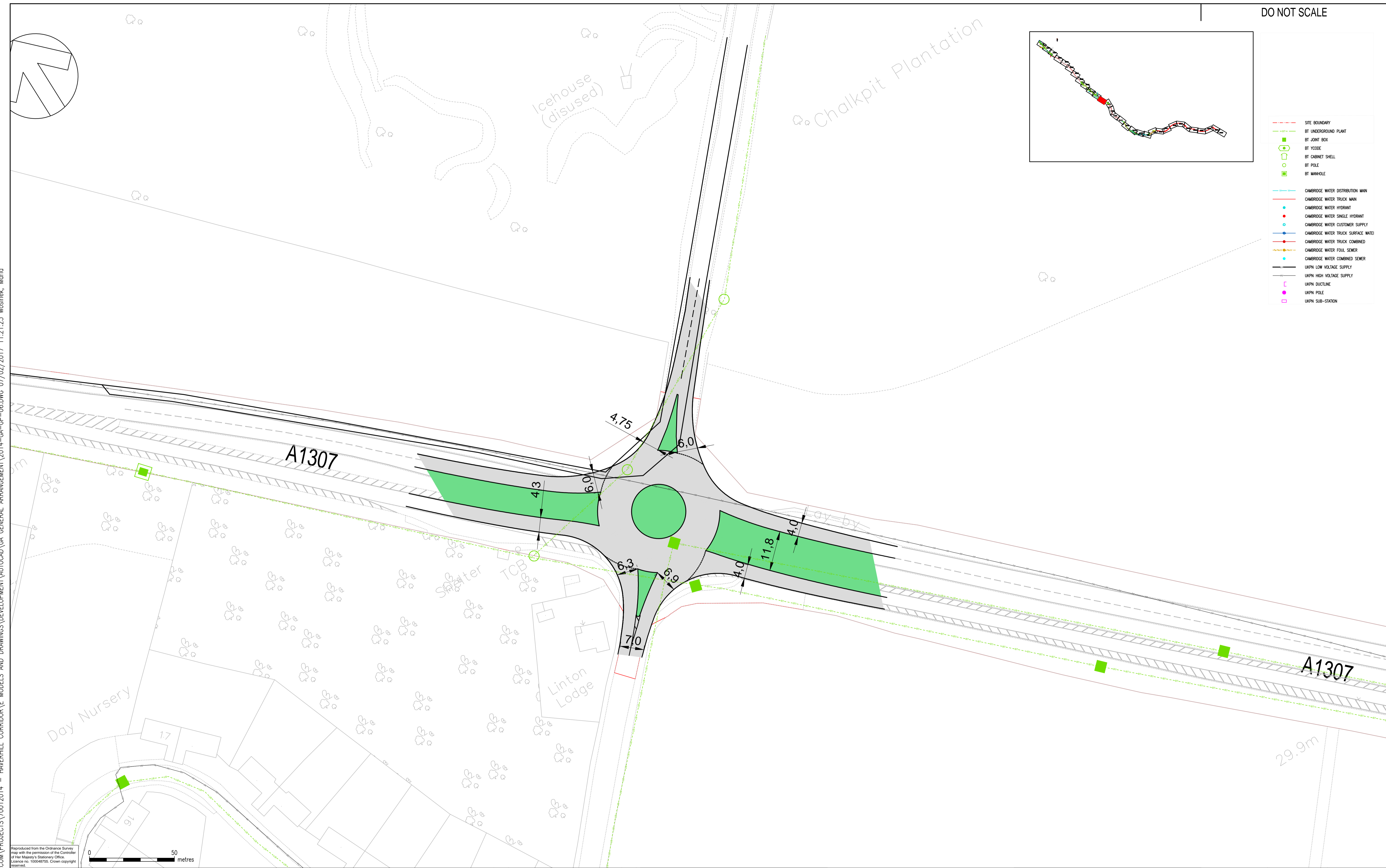
ARCHITECT:

PROJECT: **A1307 HAVERHILL TO CAMBRIDGE CORRIDOR STUDY SUSTAINABLE TRANSPORT IMPROVEMENTS**

TITLE: **NEW PARK & RIDE WEST OF A11 HIGH STREET ACCESS**

SCALE @ A1:	1:1000	CHECKED:	AKM	APPROVED:	SR
CAO FILE:	2014-GA-GP-03.DWG	DESIGN DRAWN:	MW	DATE:	December 16
PROJECT No:	70012014	DRAWING No:	2014-GA-GP-03	REV:	A

© WSP Group Ltd



- SITE BOUNDARY
- BT UNDERGROUND PLANT
- BT JOINT BOX
- BT YOCODE
- BT CABINET SHELL
- BT POLE
- BT MANHOLE

- CAMBRIDGE WATER DISTRIBUTION MAIN
- CAMBRIDGE WATER TRUCK MAIN
- CAMBRIDGE WATER HYDRANT
- CAMBRIDGE WATER SINGLE HYDRANT
- CAMBRIDGE WATER CUSTOMER SUPPLY
- CAMBRIDGE WATER TRUCK SURFACE WATER
- CAMBRIDGE WATER TRUCK COMBINED
- CAMBRIDGE WATER FOUL SEWER
- CAMBRIDGE WATER COMBINED SEWER

- UKPN LOW VOLTAGE SUPPLY
- UKPN HIGH VOLTAGE SUPPLY
- UKPN DUCTLINE
- UKPN POLE
- UKPN SUB-STATION

\\SER02002\UK.WSPGROUP.COM\PROJECTS\70012014 - HAVERHILL CORRIDOR\E MODELS AND DRAWINGS\DEVELOPMENT\AUTOCAD\GA GENERAL ARRANGEMENT\2014-GA-GP-06.DWG 07/02/2017 11:21:23 Wesinek, Mario

Reproduced from the Ordnance Survey map with the permission of the Controller of Her Majesty's Stationery Office. Licence no. 100048755. Crown copyright reserved.



REV	DATE	BY	DESCRIPTION	CHK	APP
A	31/01/2017	MW	FIRST ISSUE	AKM	SP

DRAWING STATUS: FOR INFORMATION ONLY

Newnham House, Cambridge Business Park, Cambridge CB4 0WZ
 Tel: +44 (0)1223 436 600 Fax: +44 (0)1223 436 601
 www.wspgroup.com www.pbworld.com

CLIENT: Cambridgeshire County Council
 ARCHITECT:

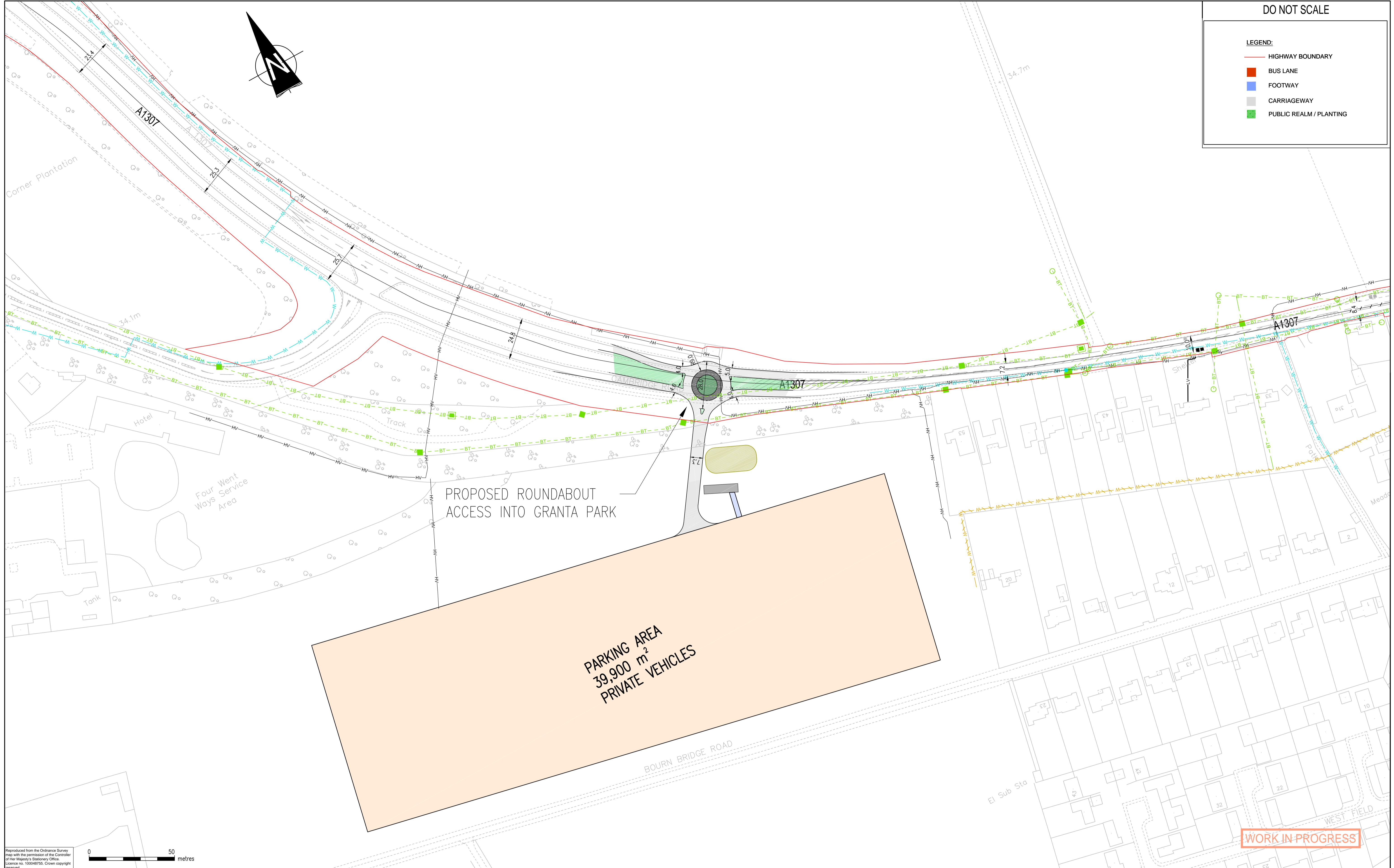
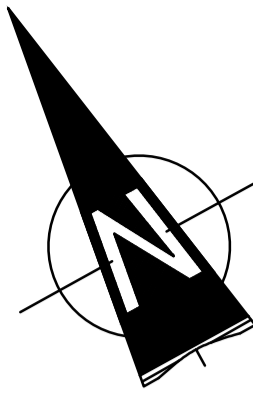
PROJECT: A1307 HAVERHILL TO CAMBRIDGE CORRIDOR STUDY SUSTAINABLE TRANSPORT IMPROVEMENTS
 TITLE: JUNCTION IMPROVEMENT OF A11 HIGH STREET ACCESS

SCALE @ A1:	1:500	CHECKED:	AKM	APPROVED:	SR
CAD FILE:	2014-GA-GP-06.DWG	DESIGN-DRAWN:	MW	DATE:	January 17
PROJECT No:	70012014	DRAWING No:	2014-GA-GP-06	REV:	A

DO NOT SCALE

LEGEND:

- HIGHWAY BOUNDARY
- BUS LANE
- FOOTWAY
- CARRIAGEWAY
- PUBLIC REALM / PLANTING



WORK IN PROGRESS

Reproduced from the Ordnance Survey map with the permission of the Controller of Her Majesty's Stationery Office. Licence no. 100048755. Crown copyright reserved.

0 50 metres

REV	DATE	BY	DESCRIPTION	CHK	APD
A	21/10/2016	ACC	FIRST ISSUE	AKM	

DRAWING STATUS: FOR INFORMATION ONLY

WSP | **PARSONS BRINCKERHOFF**

66-68 Hills Road, Cambridge CB2 1LA
Tel: +44 (0)1223 558 050 Fax: +44 (0)1223 558 051
www.wspgroup.com www.pbworld.com

CLIENT: Cambridgeshire County Council

ARCHITECT:

PROJECT: A1307 HAVERHILL TO CAMBRIDGE CORRIDOR STUDY SUSTAINABLE TRANSPORT IMPROVEMENTS

TITLE: NEW PARK AND RIDE EAST OF A11 ROUNDABOUT JUNCTION OPTION

SCALE @ A1: 1:1000	CHECKED: AKM	APPROVED:
CAD FILE: 2014-GA-GP-02.DWG	DESIGN-DRAWN: ACC	DATE: February 17
PROJECT No: 70012014	DRAWING No: 2014-GA-GP-02	REV: A

© WSP Group Ltd

L:\Y0012014 - HAVERHILL CORRIDOR\E MODELS AND DRAWINGS\DEVELOPMENT\AUTOCAD\GA GENERAL ARRANGEMENT\2014-GA-GP-02.DWG 08/02/2017 11:14:05 Wosinek, Maria