

REPORT N° 70012014-2016-04

A1307 HAVERHILL TO CAMBRIDGE

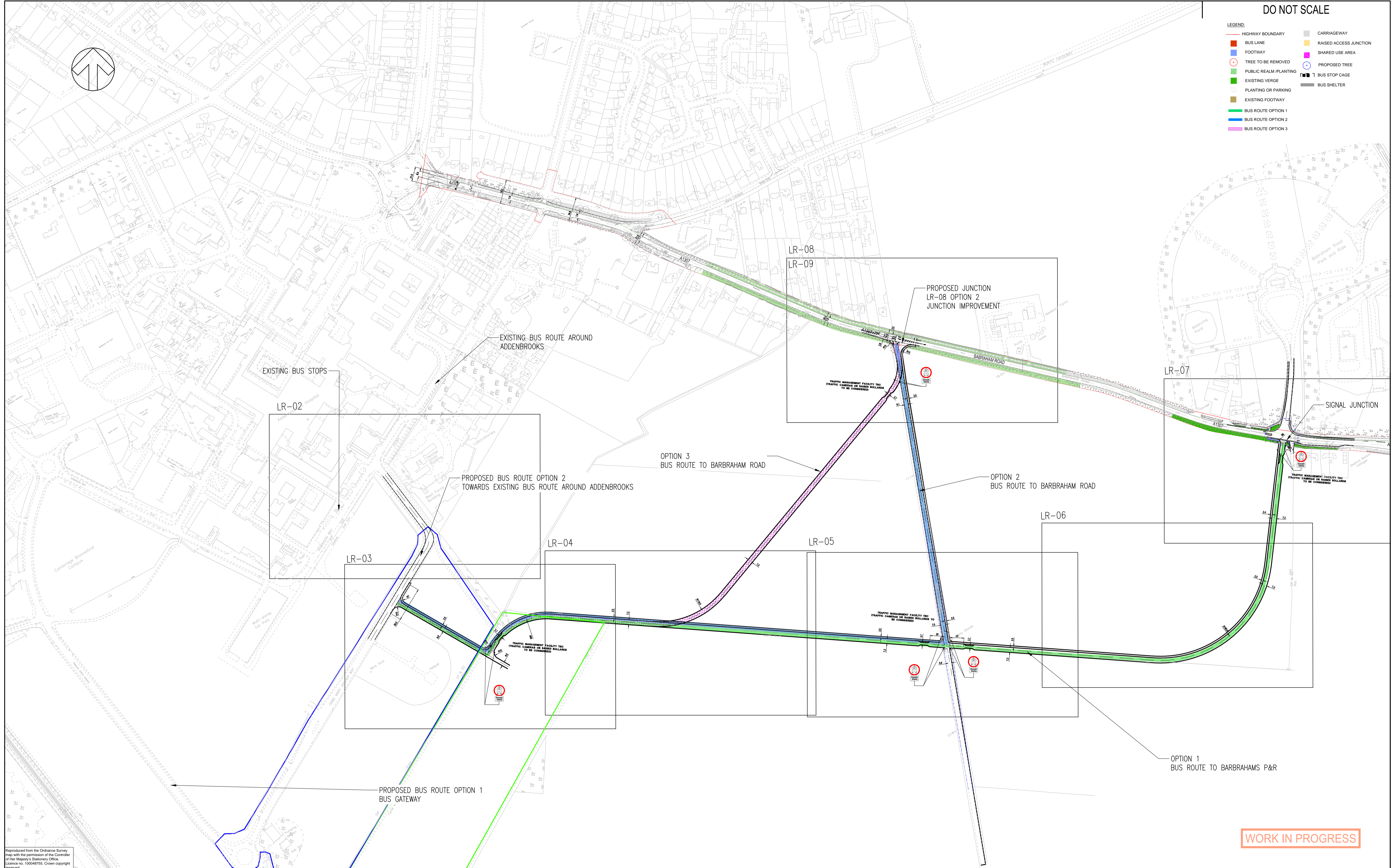
PREFERRED OPTIONS REPORT APPENDICES

FEBRUARY 2017

APPENDIX C

DO NOT SCALE

- LEGEND:**
- HIGHWAY BOUNDARY
 - BUS LANE
 - FOOTWAY
 - ⊖ TREE TO BE REMOVED
 - ⊕ PUBLIC REALM / PLANTING
 - EXISTING VERGE
 - PLANTING OR PARKING
 - EXISTING FOOTWAY
 - BUS ROUTE OPTION 1
 - BUS ROUTE OPTION 2
 - BUS ROUTE OPTION 3
 - CARRIAGEWAY
 - RAISED ACCESS JUNCTION
 - SHARED USE AREA
 - ⊕ PROPOSED TREE
 - ⊖ BUS STOP CAGE
 - BUS SHELTER

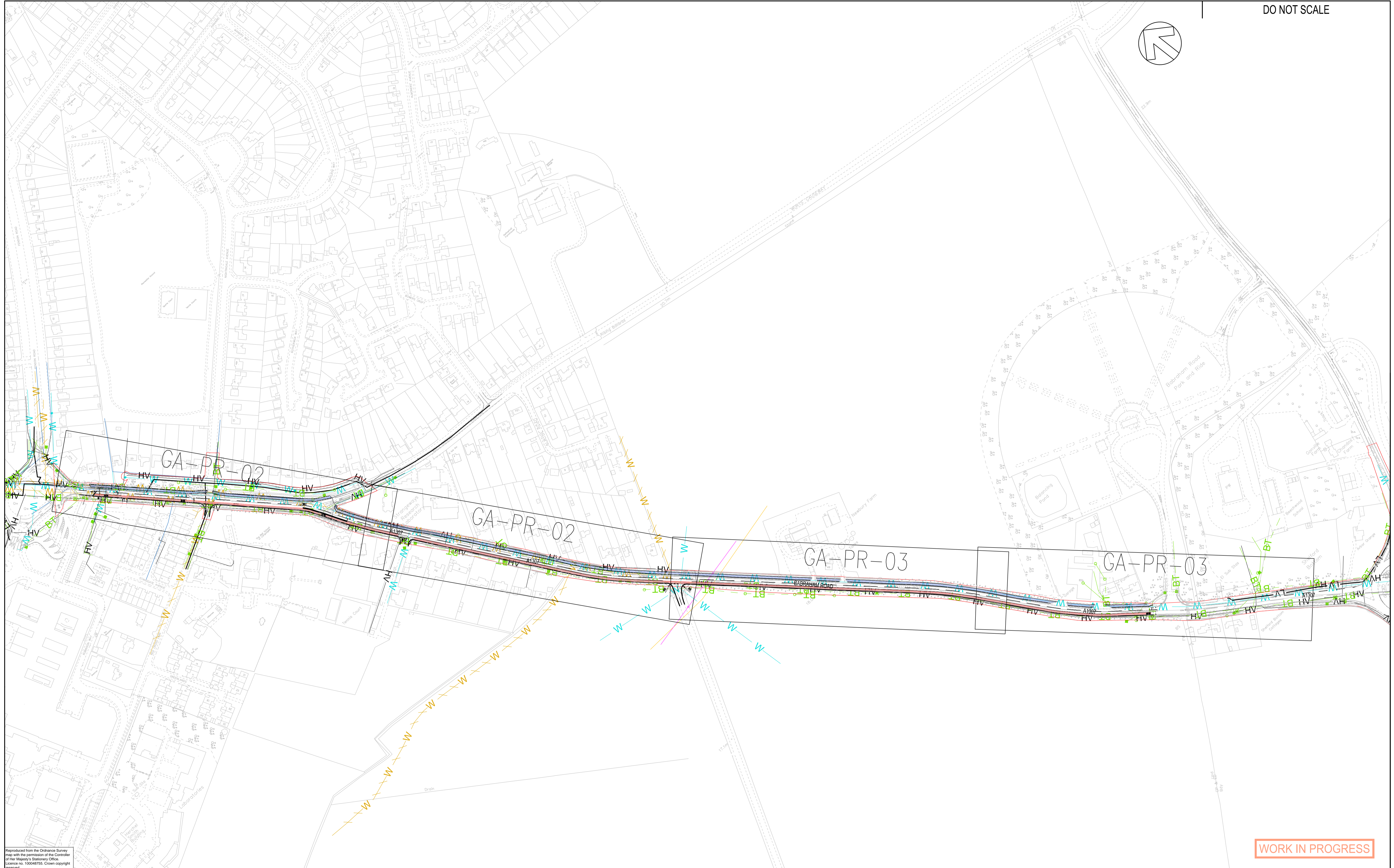
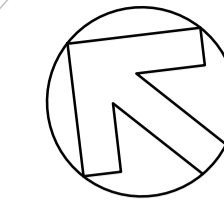


L:\Y0012014 - HAVERHILL CORRIDOR\E MODELS AND DRAWINGS\DEVELOPMENT\AUTOCAD\GA GENERAL ARRANGEMENT\2014-GA-LR-02.DWG 23/11/2016 13:49:41 Malecki, Artur

Reproduced from the Ordnance Survey map with the permission of the Controller of Her Majesty's Stationery Office. Licence no. 100048755. Crown copyright reserved.

WORK IN PROGRESS

<table border="1" style="width: 100%; border-collapse: collapse;"> <tr> <td style="width: 5%;">A</td> <td style="width: 15%;">18/11/2016</td> <td style="width: 5%;">MM</td> <td style="width: 45%;">FIRST ISSUE</td> <td style="width: 10%; text-align: center;">AKM</td> <td style="width: 10%; text-align: center;">SR</td> </tr> <tr> <td>REV</td> <td>DATE</td> <td>BY</td> <td>DESCRIPTION</td> <td>CHK</td> <td>APD</td> </tr> </table> <p style="text-align: center;">DRAWING STATUS: FOR INFORMATION ONLY</p>	A	18/11/2016	MM	FIRST ISSUE	AKM	SR	REV	DATE	BY	DESCRIPTION	CHK	APD	<p>66-68 Hills Road, Cambridge CB2 1LA Tel: +44 (0)1223 558 050 Fax: +44 (0)1223 558 051 www.wspgroup.com www.pbworld.com</p>	<p>CLIENT: Cambridgeshire County Council</p>	<p>PROJECT: A1307 HAVERHILL TO CAMBRIDGE CORRIDOR STUDY SUSTAINABLE TRANSPORT IMPROVEMENTS</p> <p>TITLE: PROPOSED IMPROVEMENTS OFF HIGHWAY SECTION GENERAL PLAN</p>	<p>SCALE @ A1: NTS</p> <p>CAD FILE: 2014-GA-LR-02.DWG</p> <p>PROJECT No: 70012014</p>	<p>CHECKED: AKM</p> <p>DESIGN-DRAWN: MW</p> <p>DRAWING No: 2014-GA-LR-01</p>	<p>APPROVED: SR</p> <p>DATE: November 16</p> <p>REV: A</p>
A	18/11/2016	MM	FIRST ISSUE	AKM	SR													
REV	DATE	BY	DESCRIPTION	CHK	APD													
© WSP Group Ltd																		



\\SERV02012\UK.WSPGROUP.COM\PROJECTS\70012014 - HAVERHILL CORRIDOR\E MODELS AND DRAWINGS\DEVELOPMENT\AUTOCAD\GA GENERAL ARRANGEMENT\2014-GA-PR-01.DWG 16/12/2016 16:35:07 Johnson, Graham

Reproduced from the Ordnance Survey map with the permission of the Controller of Her Majesty's Stationery Office. Licence no. 100048755. Crown copyright reserved.

WORK IN PROGRESS

REV	DATE	BY	DESCRIPTION	CHK	APD
A	17/10/16	GW	FIRST ISSUE	AKM	SR
DRAWING STATUS: FOR INFORMATION ONLY					

WSP | **PARSONS BRINCKERHOFF**

66-68 Hills Road, Cambridge CB2 1LA
Tel: +44 (0)1223 558 050 Fax: +44 (0)1223 558 051
www.wspgroup.com www.pbworld.com

CLIENT: **Cambridgeshire County Council**

ARCHITECT:

PROJECT: **A1307 HAVERHILL TO CAMBRIDGE CORRIDOR STUDY**

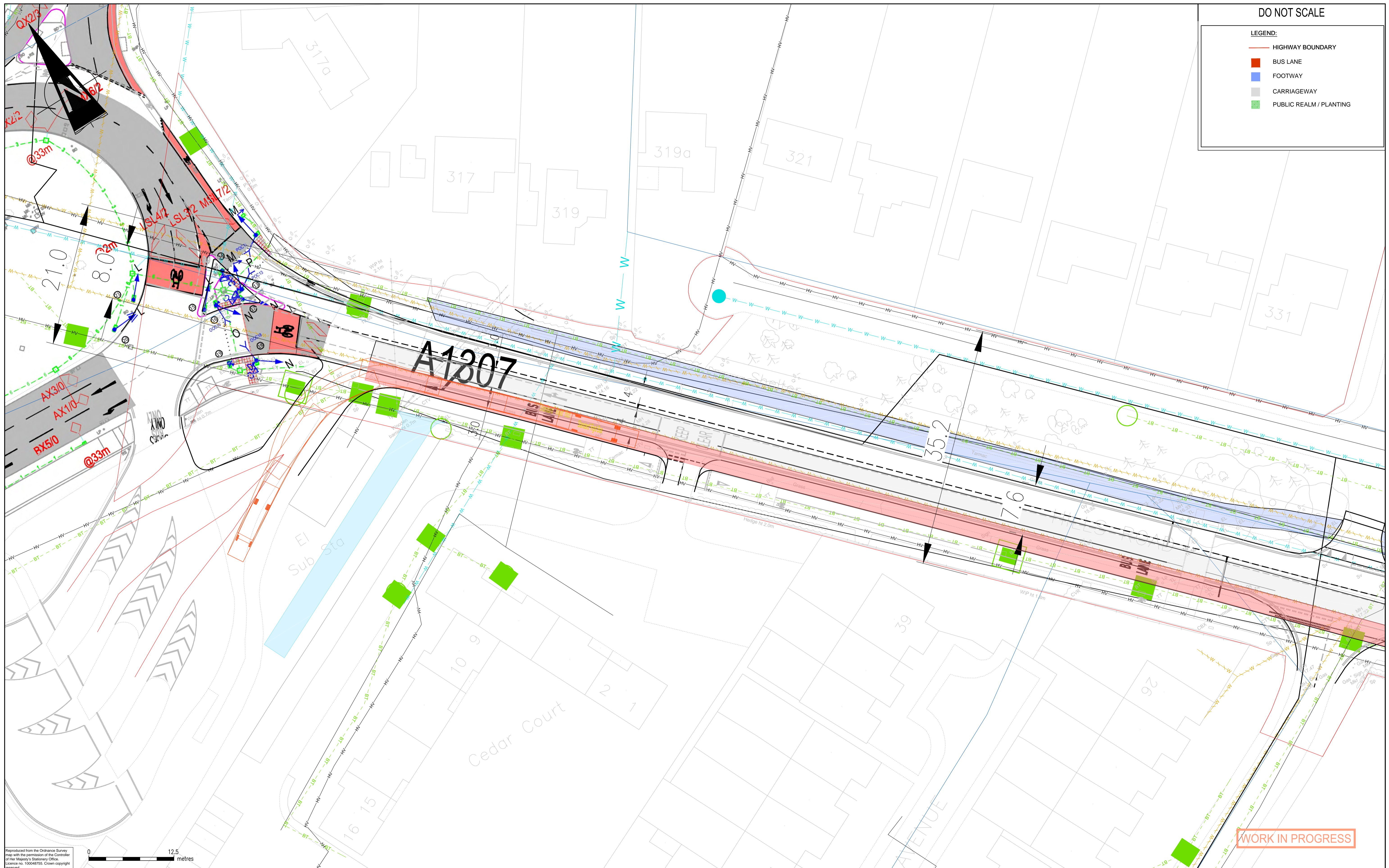
TITLE: **BABRAHAM ROAD PARK & RIDE TO CAMBRIDGE BIOMEDICAL CAMPUS ON HIGHWAY LINK SHEET 1 TO 4**

SCALE @ A1: 1:2000	CHECKED: AKM	APPROVED: SR
CAD FILE: 2014-GA-PR-01.DWG	DESIGN DRAWN: GW	DATE: December 16
PROJECT No: 70012014	DRAWING No: 2014-GA-PR-01	REV: A
© WSP Group Ltd		

DO NOT SCALE

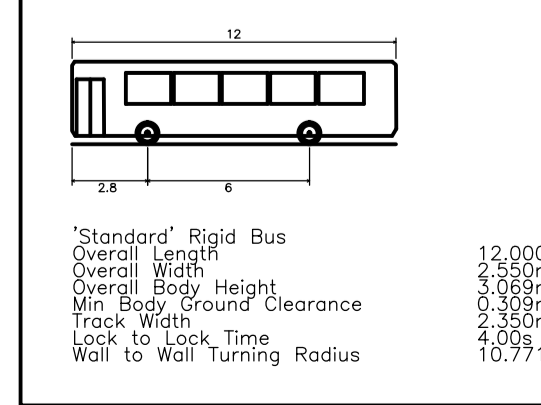
LEGEND:

- HIGHWAY BOUNDARY
- BUS LANE
- FOOTWAY
- CARRIAGEWAY
- PUBLIC REALM / PLANTING



WORK IN PROGRESS

Reproduced from the Ordnance Survey map with the permission of the Controller of Her Majesty's Stationery Office. Licence no. 100048755. Crown copyright reserved.



L:\Y0012014 - HAVERHILL CORRIDOR\E MODELS AND DRAWINGS\DEVELOPMENT\AUTOCAD\GA GENERAL ARRANGEMENT\2014-GA-AD-03.DWG 19/12/2016 14:15:54 Molecki, Artur

REV	DATE	BY	DESCRIPTION	CHK	APD
A	13/10/2016	ACC	FIRST ISSUE		AKM
DRAWING STATUS: FOR INFORMATION ONLY					

WSP | **PARSONS BRINCKERHOFF**

66-68 Hills Road, Cambridge CB2 1LA
Tel: +44 (0)1223 558 050 Fax: +44 (0)1223 558 051
www.wspgroup.com www.pbworld.com

CLIENT: **Cambridgeshire County Council**

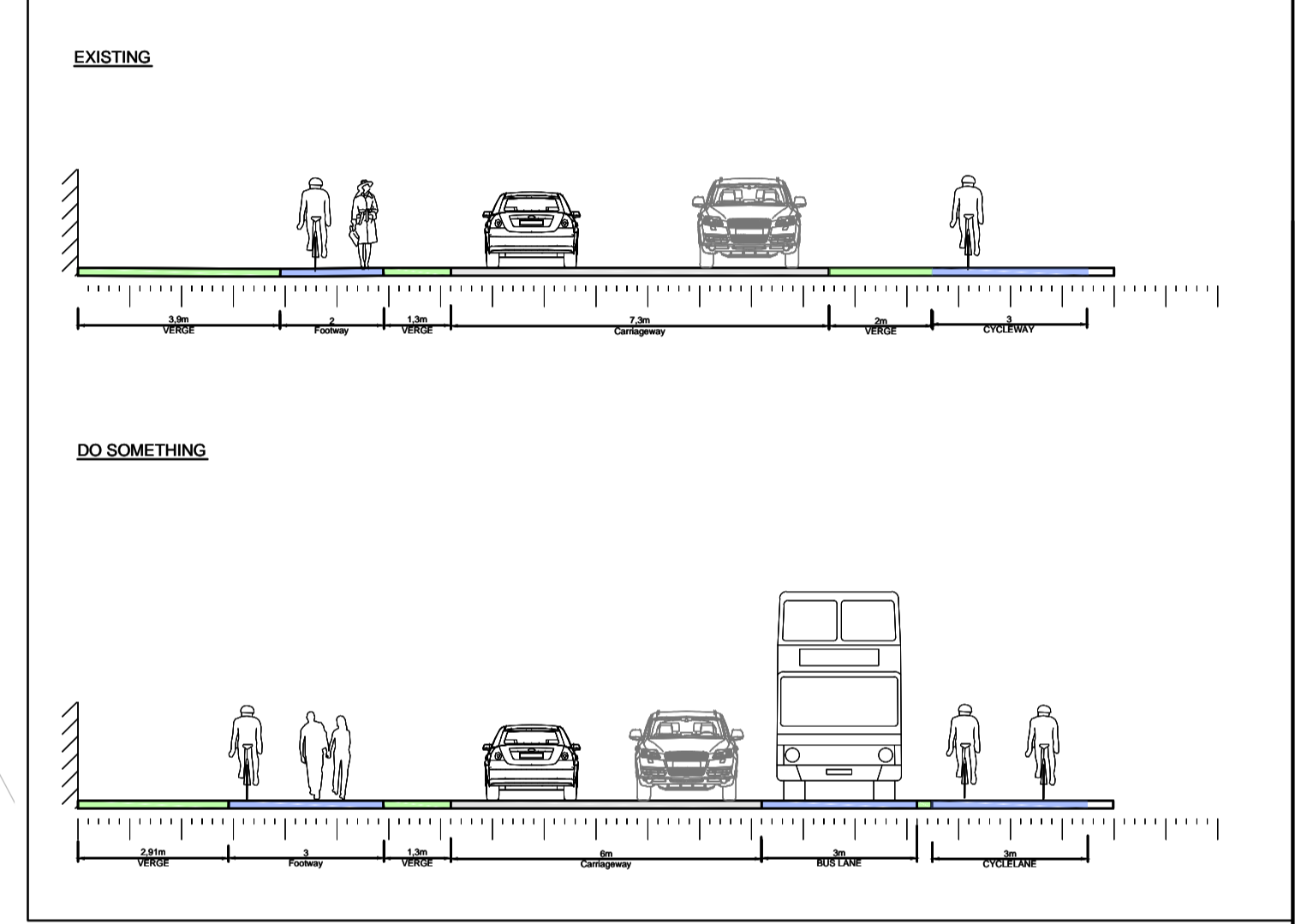
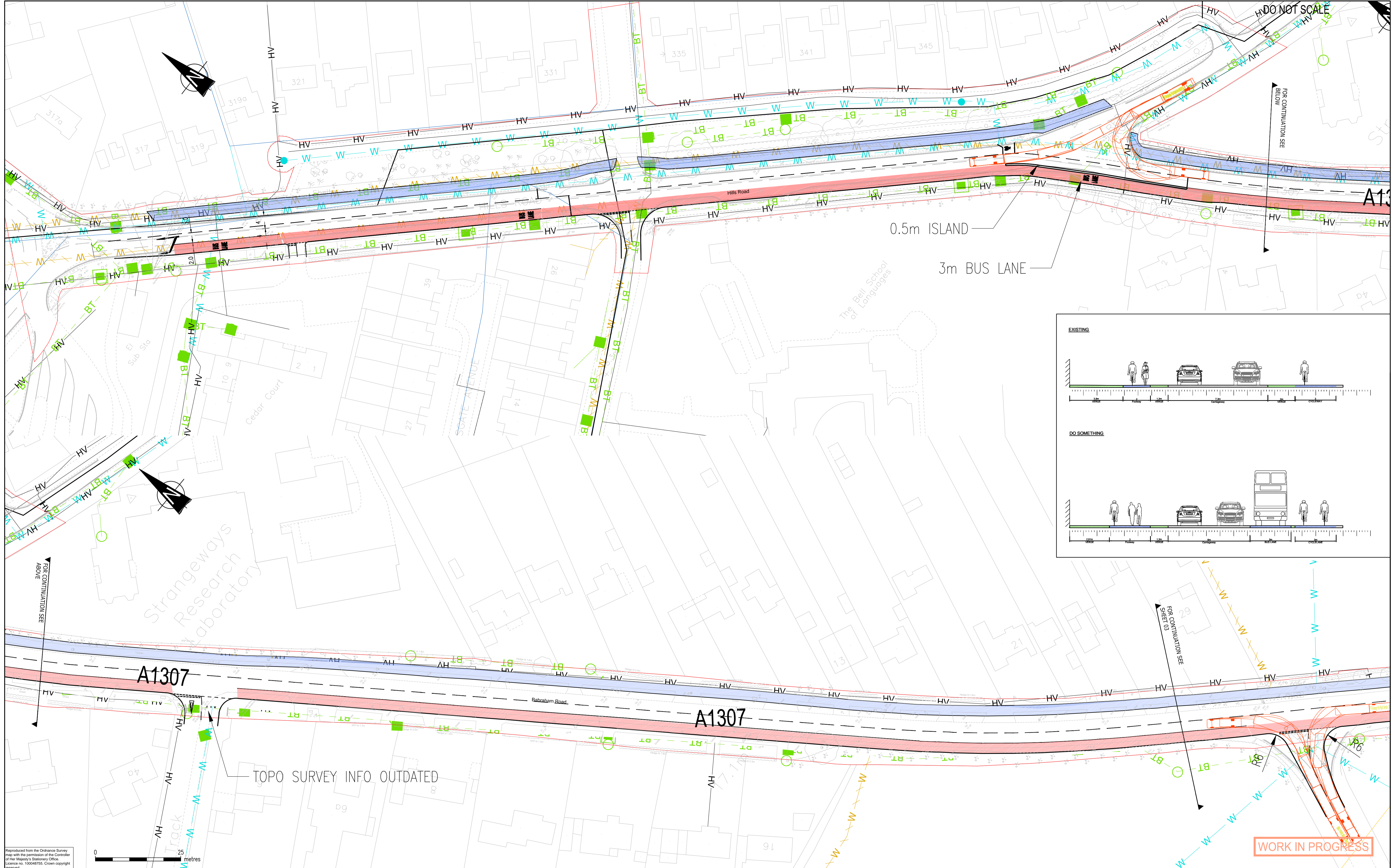
ARCHITECT:

PROJECT: **A1307 HAVERHILL TO CAMBRIDGE CORRIDOR STUDY SUSTAINABLE TRANSPORT IMPROVEMENTS**

TITLE: **BABRAHAM ROAD PARK & RIDE TO CAMBRIDGE BIOMEDICAL CAMPUS ON HIGHWAY LINK BUS LANE WITHIN ROUNDABOUT**

SCALE @ A1:	1:250	CHECKED:	AKM	APPROVED:	
CAD FILE:	2014-GA-AD-03.DWG	DESIGN/DRAWN:	ACC	DATE:	December 16
PROJECT No:	70012014	DRAWING No:	2014-GA-AD-03	REV:	A
© WSP Group Ltd					

\\SER02002\UK.WSPGROUP.COM\PROJECTS\70012014 - HAVERHILL CORRIDOR MODELS AND DRAWINGS\DEVELOPMENT\AUTOCAD\GA GENERAL ARRANGEMENT\TO REV\REV\2014-GA-PR-01.DWG 16/12/2016 13:55:24 Molecki, Artur



Reproduced from the Ordnance Survey map with the permission of the Controller of Her Majesty's Stationery Office. Licence no. 100048755. Crown copyright reserved.

0 25 metres

LEGEND:

- HIGHWAY BOUNDARY
- BUS LANE
- FOOTWAY
- CARRIAGEWAY
- PUBLIC REALM/PLANTING

REV	DATE	BY	DESCRIPTION	CHK	APD
A	12/10/2016	GW	FIRST ISSUE	AKM	SR
DRAWING STATUS: FOR INFORMATION ONLY					

WSP | PARSONS BRINCKERHOFF

66-68 Hills Road, Cambridge CB2 1LA
 Tel: +44 (0)1223 558 050 Fax: +44 (0)1223 558 051
 www.wspgroup.com www.pbworld.com

CLIENT: **Cambridgeshire County Council**

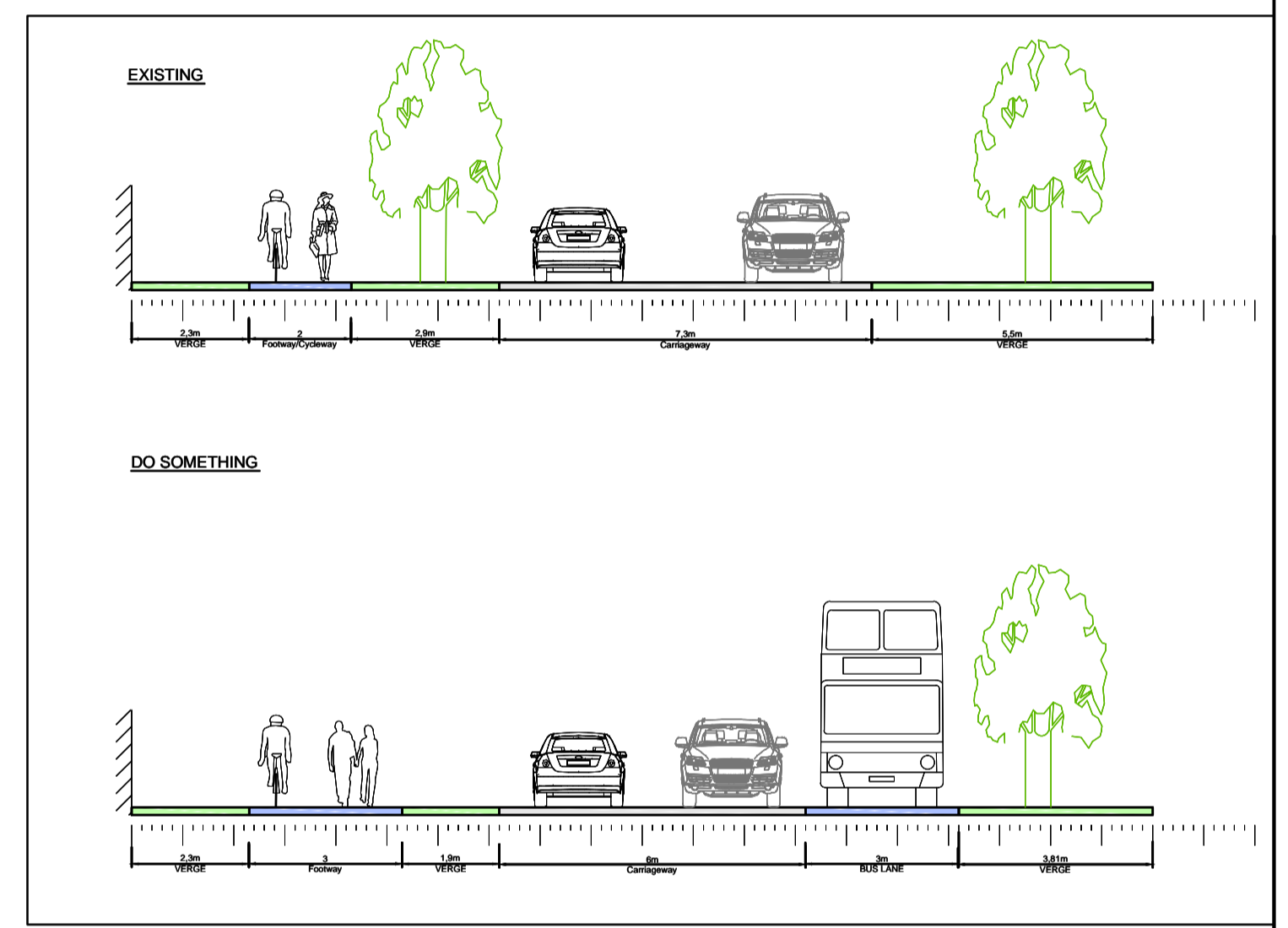
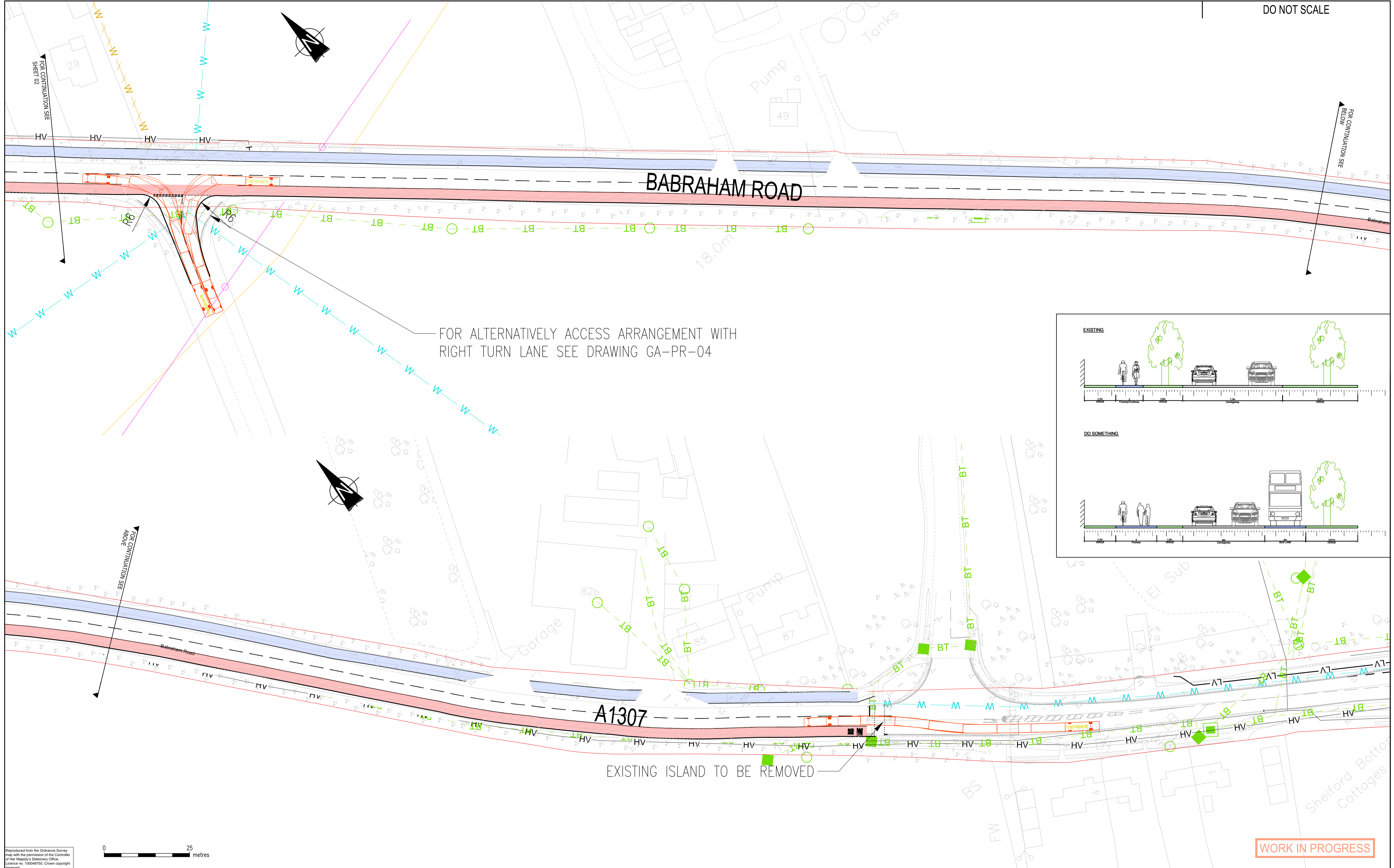
ARCHITECT:

PROJECT: **A1307 HAVERHILL TO CAMBRIDGE CORRIDOR STUDY SUSTAINABLE TRANSPORT IMPROVEMENTS**

TITLE: **BABRAHAM ROAD PARK & RIDE TO CAMBRIDGE BIOMEDICAL CAMPUS : ON/OFF HIGHWAY BUS LINK SHEET 2 OF 4**

SCALE @ A1: 1:500	CHECKED: AKM	APPROVED: SR
CAD FILE: 2014-GA-PR-01.DWG	DESIGN/DRAWN: GW	DATE: October 16
PROJECT No: 70012014	DRAWING No: 2014-GA-PR-02	REV: A

© WSP Group Ltd



WORK IN PROGRESS

\\SERV02012\UK.WSPGROUP.COM\PROJECTS\70012014 - HAVERHILL CORRIDOR MODELS AND DRAWINGS\DEVELOPMENT\AUTOCAD\GA GENERAL ARRANGEMENT TO RENAME\2014-GA-PR-01.DWG 16/12/2016 13:55:54 Malecki, Artur

Reproduced from the Ordnance Survey map with the permission of the Controller of Her Majesty's Stationery Office. Licence no. 100048755. Crown copyright reserved.

0 25 metres

LEGEND:

- HIGHWAY BOUNDARY
- BUS LANE
- FOOTWAY
- CARRIAGEWAY
- PUBLIC REALM/PLANTING

REV	DATE	BY	DESCRIPTION	CHK	APD
A	12/10/2016	GW	FIRST ISSUE	AKM	SR
DRAWING STATUS:					

WSP | PARSONS BRINCKERHOFF

66-68 Hills Road, Cambridge CB2 1LA
Tel: +44 (0)1223 558 050 Fax: +44 (0)1223 558 051
www.wspgroup.com www.pbworld.com

CLIENT: **Cambridgeshire County Council**

ARCHITECT:

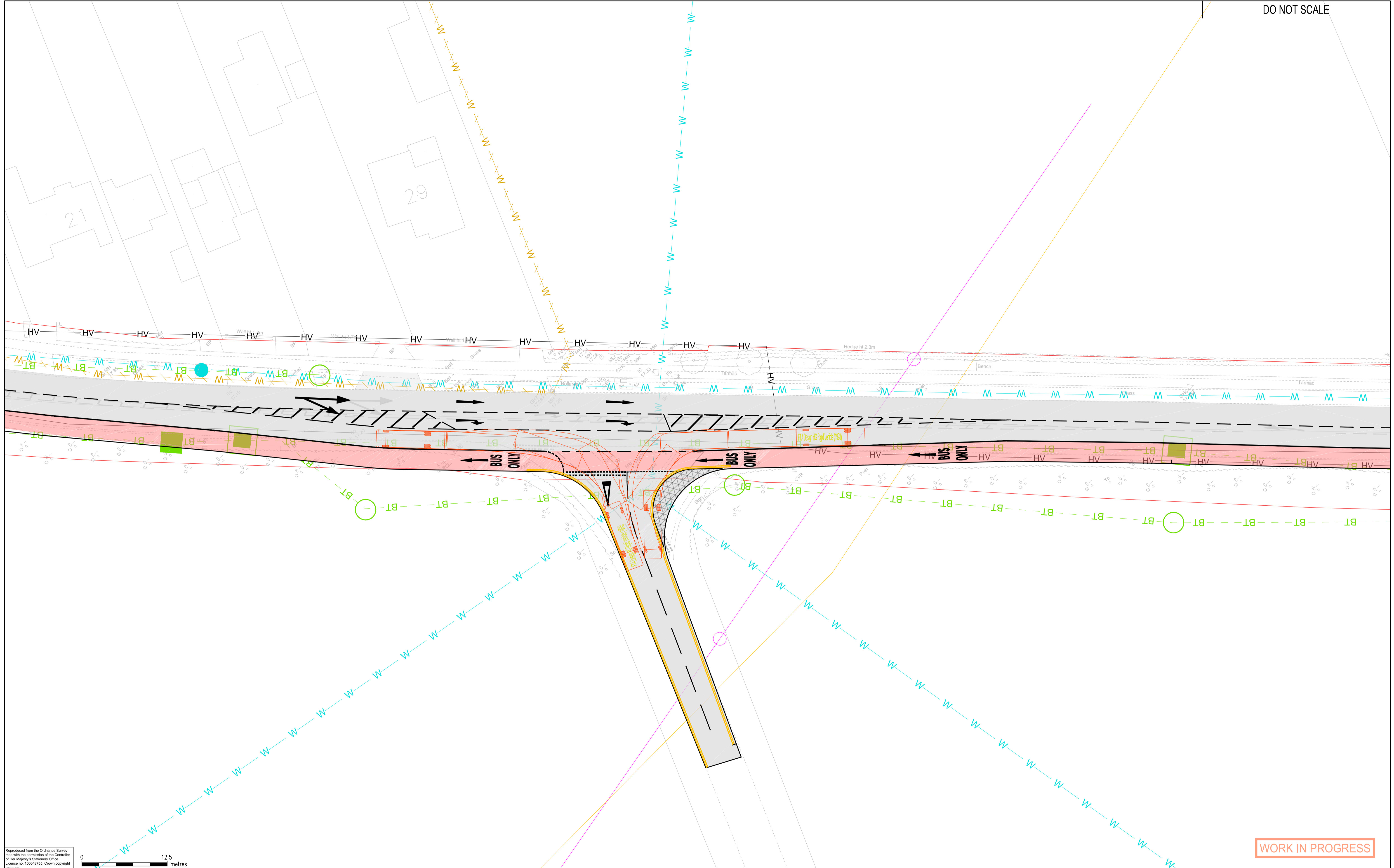
PROJECT: **A1307 HAVERHILL TO CAMBRIDGE CORRIDOR STUDY SUSTAINABLE TRANSPORT IMPROVEMENTS**

TITLE: **BABRAHAM ROAD PARK & RIDE TO CAMBRIDGE BIOMEDICAL CAMPUS : ON/OFF HIGHWAY BUS LINK SHEET 3 OF 4**

SCALE @ A1: 1:500	CHECKED: AKM	APPROVED: SR
CAD FILE: 2014-GA-PR-01.DWG	DESIGN/DRAWN: GW	DATE: October 16
PROJECT No: 70012014	DRAWING No: 2014-GA-PR-03	REV: A

© WSP Group Ltd

\\SER02002\UK.WSPGROUP.COM\PROJECTS\70012014 - HAVERHILL CORRIDOR\E MODELS AND DRAWINGS\DEVELOPMENT\AUTOCAD\GA GENERAL ARRANGEMENT TO REVAME\2014-GA-PR-01.DWG 16/12/2016 13:56:11 Molecki, Artur



Reproduced from the Ordnance Survey map with the permission of the Controller of Her Majesty's Stationery Office. Licence no. 100048755. Crown copyright reserved.

0 12.5 metres

WORK IN PROGRESS

LEGEND:

- HIGHWAY BOUNDARY
- BUS LANE
- FOOTWAY
- CARRIAGEWAY
- PUBLIC REALM / PLANTING

REV	DATE	BY	DESCRIPTION	CHK	APD
A	12/10/2016	GW	FIRST ISSUE	AKM	SR

DRAWING STATUS:

WSP | PARSONS BRINCKERHOFF

66-68 Hills Road, Cambridge CB2 1LA
 Tel: +44 (0)1223 558 050 Fax: +44 (0)1223 558 051
 www.wspgroup.com www.pbworld.com

CLIENT: Cambridgeshire County Council

ARCHITECT:

PROJECT: A1307 HAVERHILL TO CAMBRIDGE CORRIDOR STUDY SUSTAINABLE TRANSPORT IMPROVEMENTS

TITLE: BABRAHAM ROAD PARK & RIDE TO CAMBRIDGE BIOMEDICAL CAMPUS : GRANHAM'S JUNCTION TURNING LANE

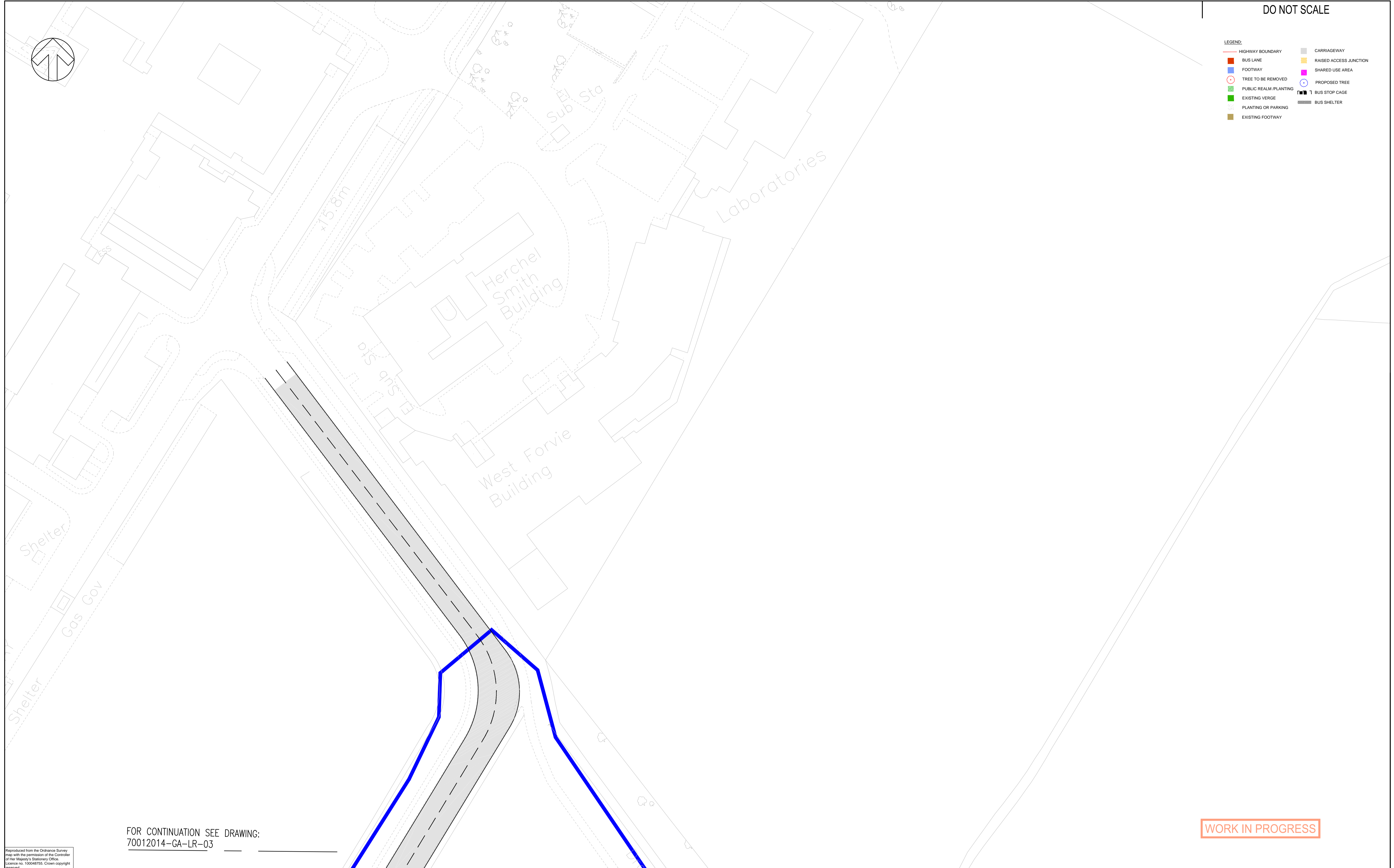
SHEET 4 OF 4

SCALE @ A1: 1:250	CHECKED: AKM	APPROVED: SR
CAD FILE: 2014-GA-PR-01.DWG	DESIGN DRAWN: GW	DATE: October 16
PROJECT No: 70012014	DRAWING No: 2014-GA-PR-04	REV: A

© WSP Group Ltd

DO NOT SCALE

- LEGEND:
- HIGHWAY BOUNDARY
 - BUS LANE
 - FOOTWAY
 - TREE TO BE REMOVED
 - PUBLIC REALM PLANTING
 - EXISTING VERGE
 - PLANTING OR PARKING
 - EXISTING FOOTWAY
 - CARRIAGEWAY
 - RAISED ACCESS JUNCTION
 - SHARED USE AREA
 - PROPOSED TREE
 - BUS STOP CAGE
 - BUS SHELTER



FOR CONTINUATION SEE DRAWING:
70012014-GA-LR-03

WORK IN PROGRESS

Reproduced from the Ordnance Survey map with the permission of the Controller of Her Majesty's Stationery Office. Licence no. 100048755. Crown copyright reserved.

REV	DATE	BY	DESCRIPTION	CHK	APD
A	18/11/2016	MW	FIRST ISSUE	AKM	SR

DRAWING STATUS: FOR INFORMATION ONLY

WSP | **PARSONS BRINCKERHOFF**

66-68 Hills Road, Cambridge CB2 1LA
Tel: +44 (0)1223 558 050 Fax: +44 (0)1223 558 051
www.wspgroup.com www.pbworld.com

CLIENT: Cambridgeshire County Council

ARCHITECT:

PROJECT: A1307 HAVERHILL TO CAMBRIDGE CORRIDOR STUDY SUSTAINABLE TRANSPORT IMPROVEMENTS

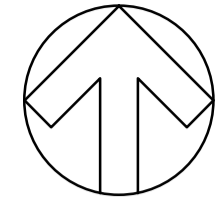
TITLE: PROPOSED IMPROVEMENTS OFF HIGHWAY SECTION SHEET 2 OF 10

SCALE @ A1: 1:500	CHECKED: AKM	APPROVED: SR
CAD FILE: 2014-GA-LR-02.DWG	DESIGN-DRAWN: MW	DATE: November 16
PROJECT No: 70012014	DRAWING No: 2014-GA-LR-02	REV: A

© WSP Group Ltd

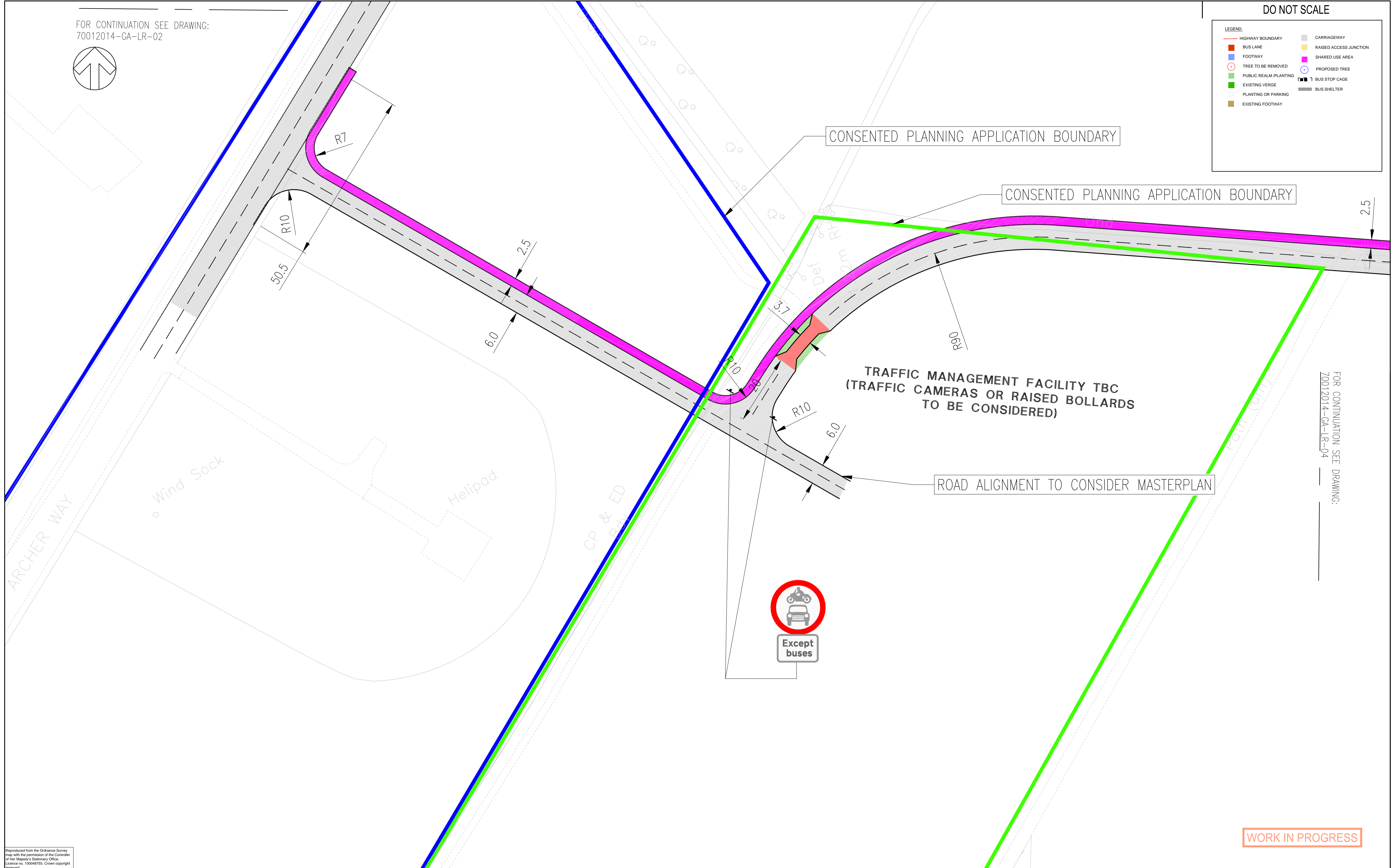
L:\70012014 - HAVERHILL CORRIDOR\E MODELS AND DRAWINGS\DEVELOPMENT\AUTOCAD\GA GENERAL ARRANGEMENT\2014-GA-LR-02.DWG 23/11/2016 13:50:19 Malecki, Artur

FOR CONTINUATION SEE DRAWING:
70012014-GA-LR-02



DO NOT SCALE

LEGEND:	
	HIGHWAY BOUNDARY
	BUS LANE
	FOOTWAY
	TREE TO BE REMOVED
	PUBLIC REALM/PLANTING
	EXISTING VERGE
	PLANTING OR PARKING
	EXISTING FOOTWAY
	CARRIAGEWAY
	RAISED ACCESS JUNCTION
	SHARED USE AREA
	PROPOSED TREE
	BUS STOP CAGE
	BUS SHELTER



FOR CONTINUATION SEE DRAWING:
70012014-GA-LR-04



WORK IN PROGRESS

Reproduced from the Ordnance Survey map with the permission of the Controller of Her Majesty's Stationery Office. Licence no. 100048755. Crown copyright reserved.

REV	DATE	BY	FIRST ISSUE	CHK	APD
A	18/11/2016	MW	FIRST ISSUE	AKM	SR

DRAWING STATUS: FOR INFORMATION ONLY

WSP | **PARSONS BRINCKERHOFF**

66-68 Hills Road, Cambridge CB2 1LA
Tel: +44 (0)1223 558 050 Fax: +44 (0)1223 558 051
www.wspgroup.com www.pbworld.com

CLIENT: Cambridgeshire County Council

ARCHITECT:

PROJECT: A1307 HAVERHILL TO CAMBRIDGE CORRIDOR STUDY SUSTAINABLE TRANSPORT IMPROVEMENTS

TITLE: PROPOSED IMPROVEMENTS OFF HIGHWAY SECTION SHEET 3 OF 9

SCALE @ A1: 1:500	CHECKED: AKM	APPROVED: SR
CAD FILE: 2014-GA-LR-02.DWG	DESIGN/DRAWN: MW	DATE: November 16
PROJECT No: 70012014	DRAWING No: 2014-GA-LR-03	REV: A

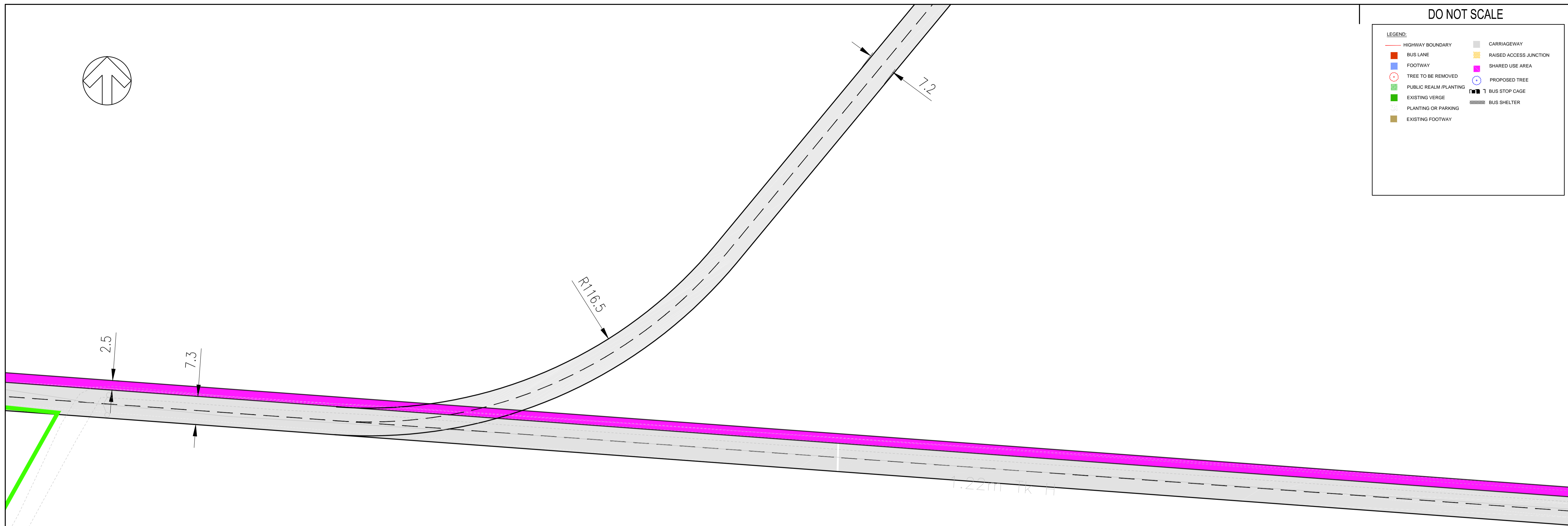
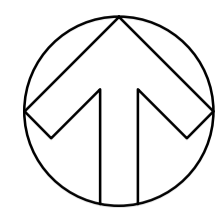
© WSP Group Ltd

L:\70012014 - HAVERHILL CORRIDOR\E MODELS AND DRAWINGS\DEVELOPMENT\AUTOCAD\GA GENERAL ARRANGEMENT\2014-GA-LR-02.DWG 23/11/2016 13:51:03 Malecki, Artur

DO NOT SCALE

LEGEND:

	HIGHWAY BOUNDARY		CARRIAGEWAY
	BUS LANE		RAISED ACCESS JUNCTION
	FOOTWAY		SHARED USE AREA
	TREE TO BE REMOVED		PROPOSED TREE
	PUBLIC REALM PLANTING		BUS STOP CAGE
	EXISTING VERGE		BUS SHELTER
	PLANTING OR PARKING		
	EXISTING FOOTWAY		



FOR CONTINUATION SEE DRAWING:
70012014-GA-LR-03

FOR CONTINUATION SEE DRAWING:
70012014-GA-LR-05

WORK IN PROGRESS

Reproduced from the Ordnance Survey map with the permission of the Controller of Her Majesty's Stationery Office. Licence no. 100048755. Crown copyright reserved.

REV	DATE	BY	DESCRIPTION	CHK	APD
A	18/11/2016	MW	FIRST ISSUE	AKM	SR

DRAWING STATUS: FOR INFORMATION ONLY

WSP | **PARSONS BRINCKERHOFF**

66-68 Hills Road, Cambridge CB2 1LA
Tel: +44 (0)1223 558 050 Fax: +44 (0)1223 558 051
www.wspgroup.com www.pbworld.com

CLIENT: Cambridgeshire County Council

ARCHITECT:

PROJECT: A1307 HAVERHILL TO CAMBRIDGE CORRIDOR STUDY SUSTAINABLE TRANSPORT IMPROVEMENTS

TITLE: PROPOSED IMPROVEMENTS OFF HIGHWAY SECTION SHEET 4 OF 9

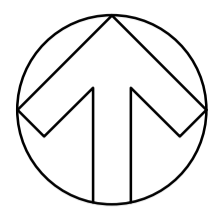
SCALE @ A1: 1:500	CHECKED: AKM	APPROVED: SR
CAD FILE: 2014-GA-LR-02.DWG	DESIGN-DRAWN: MW	DATE: November 16
PROJECT No: 70012014	DRAWING No: 2014-GA-LR-04	REV: A

© WSP Group Ltd

L:\70012014 - HAVERHILL CORRIDOR\E MODELS AND DRAWINGS\DEVELOPMENT\AUTOCAD\GA GENERAL ARRANGEMENT\2014-GA-LR-02.DWG 23/11/2016 13:51:46 Malecki, Artur

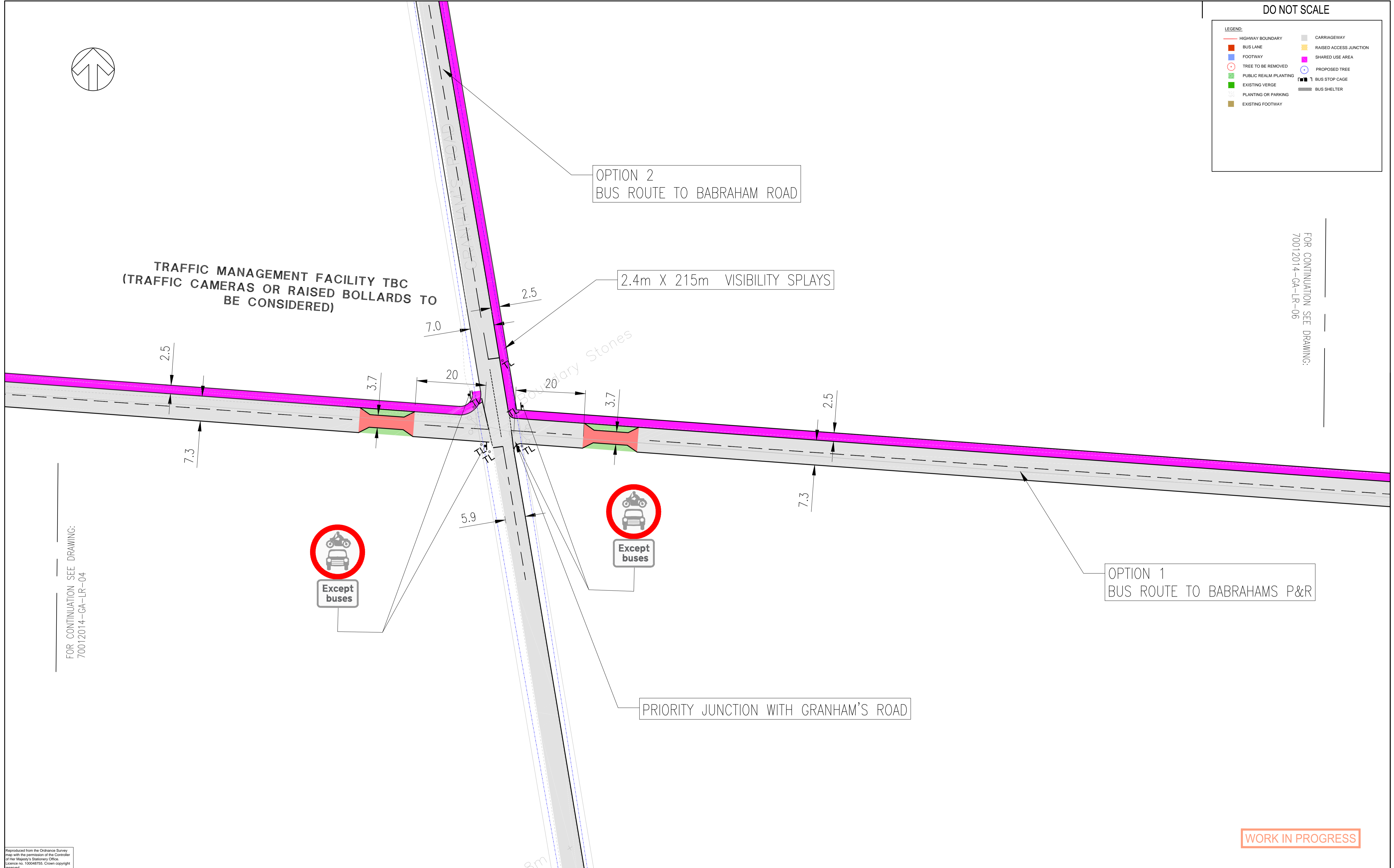
DO NOT SCALE

LEGEND:	
	HIGHWAY BOUNDARY
	BUS LANE
	FOOTWAY
	PUBLIC REALM/PLANTING
	EXISTING VERGE
	PLANTING OR PARKING
	EXISTING FOOTWAY
	CARRIAGEWAY
	RAISED ACCESS JUNCTION
	SHARED USE AREA
	TREE TO BE REMOVED
	PROPOSED TREE
	BUS STOP CAGE
	BUS SHELTER



FOR CONTINUATION SEE DRAWING:
70012014-GA-LR-06

FOR CONTINUATION SEE DRAWING:
70012014-GA-LR-04



WORK IN PROGRESS

Reproduced from the Ordnance Survey map with the permission of the Controller of Her Majesty's Stationery Office. Licence no. 100048755. Crown copyright reserved.

REV	DATE	BY	DESCRIPTION	CHK	APD
A	18/11/2016	MW	FIRST ISSUE	AKM	SR

DRAWING STATUS: FOR INFORMATION ONLY

WSP | **PARSONS BRINCKERHOFF**

66-68 Hills Road, Cambridge CB2 1LA
Tel: +44 (0)1223 558 050 Fax: +44 (0)1223 558 051
www.wspgroup.com www.pbworld.com

CLIENT: Cambridgeshire County Council

ARCHITECT:

PROJECT: A1307 HAVERHILL TO CAMBRIDGE CORRIDOR STUDY SUSTAINABLE TRANSPORT IMPROVEMENTS

TITLE: PROPOSED IMPROVEMENTS OFF HIGHWAY SECTION SHEET 5 OF 9

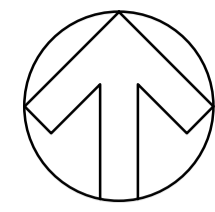
SCALE @ A1: 1:500	CHECKED: AKM	APPROVED: SR
CAD FILE: 2014-GA-LR-02.DWG	DESIGN/DRAWN: MW	DATE: November 16
PROJECT No: 70012014	DRAWING No: 2014-GA-LR-05	REV: A

© WSP Group Ltd

L:\70012014 - HAVERHILL CORRIDOR\E MODELS AND DRAWINGS\DEVELOPMENT\AUTOCAD\GA GENERAL ARRANGEMENT\2014-GA-LR-02.DWG 23/11/2016 13:52:22 Malecki, Artur

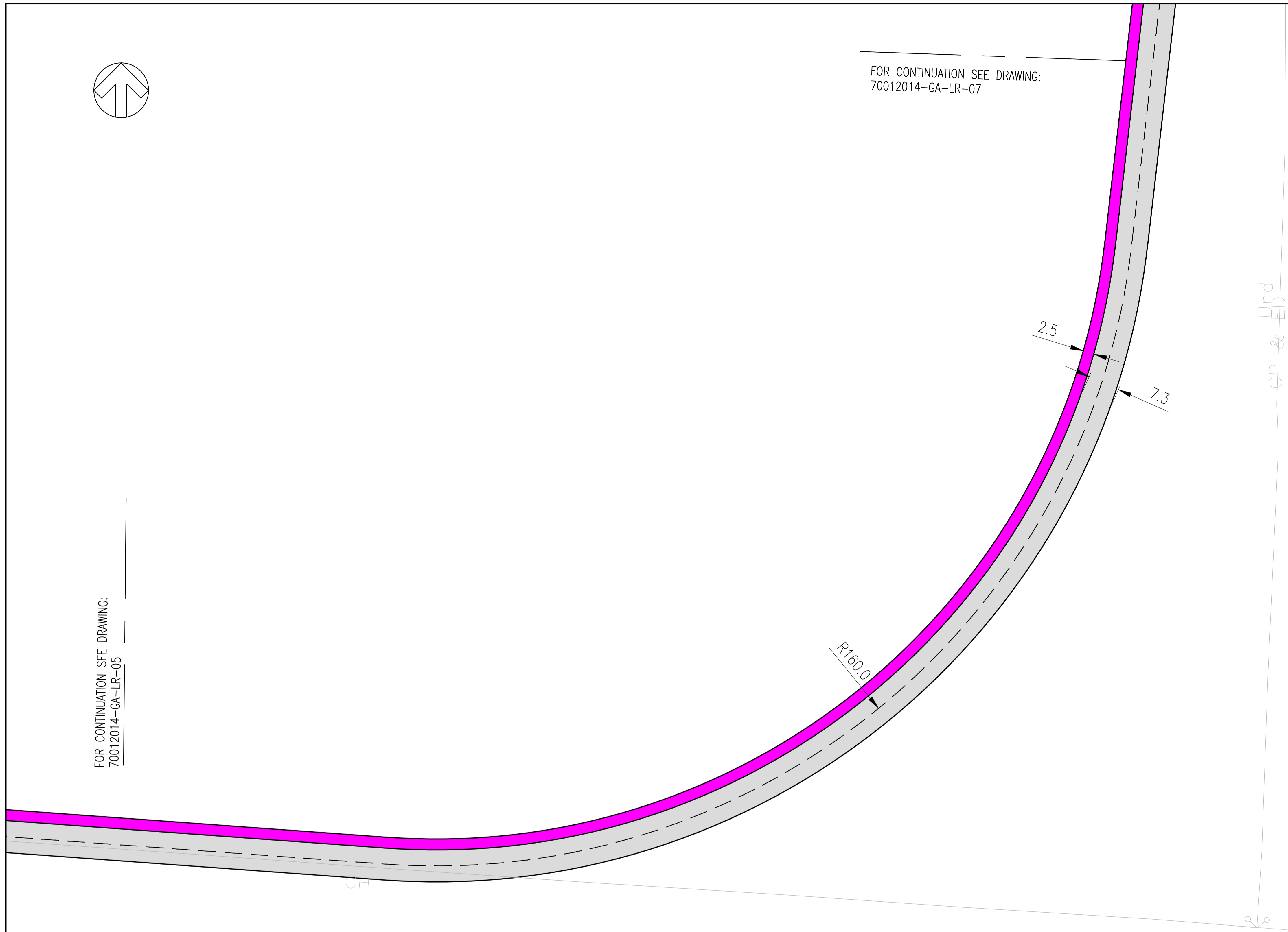
DO NOT SCALE

LEGEND:	
	HIGHWAY BOUNDARY
	BUS LANE
	FOOTWAY
	TREE TO BE REMOVED
	PUBLIC REALM/PLANTING
	EXISTING VERGE
	PLANTING OR PARKING
	EXISTING FOOTWAY
	CARRIAGEWAY
	RAISED ACCESS JUNCTION
	SHARED USE AREA
	PROPOSED TREE
	BUS STOP CAGE
	BUS SHELTER



FOR CONTINUATION SEE DRAWING:
70012014-GA-LR-07

FOR CONTINUATION SEE DRAWING:
70012014-GA-LR-05



WORK IN PROGRESS

Reproduced from the Ordnance Survey map with the permission of the Controller of Her Majesty's Stationery Office. Licence no. 100048755. Crown copyright reserved.

REV	DATE	BY	DESCRIPTION	CHK	APD
A	18/11/2016	MW	FIRST ISSUE	AKM	SR

DRAWING STATUS: FOR INFORMATION ONLY

WSP | **PARSONS BRINCKERHOFF**

66-68 Hills Road, Cambridge CB2 1LA
Tel: +44 (0)1223 558 050 Fax: +44 (0)1223 558 051
www.wspgroup.com www.pbworld.com

CLIENT: Cambridgeshire County Council

ARCHITECT:

PROJECT: A1307 HAVERHILL TO CAMBRIDGE CORRIDOR STUDY SUSTAINABLE TRANSPORT IMPROVEMENTS

TITLE: PROPOSED IMPROVEMENTS OFF HIGHWAY SECTION SHEET 1 OF 6

SCALE @ A1: 1:500	CHECKED: AKM	APPROVED: SR
CAD FILE: 2014-GA-LR-02.DWG	DESIGN-DRAWN: MW	DATE: November 16
PROJECT No: 70012014	DRAWING No: 2014-GA-LR-06	REV: A

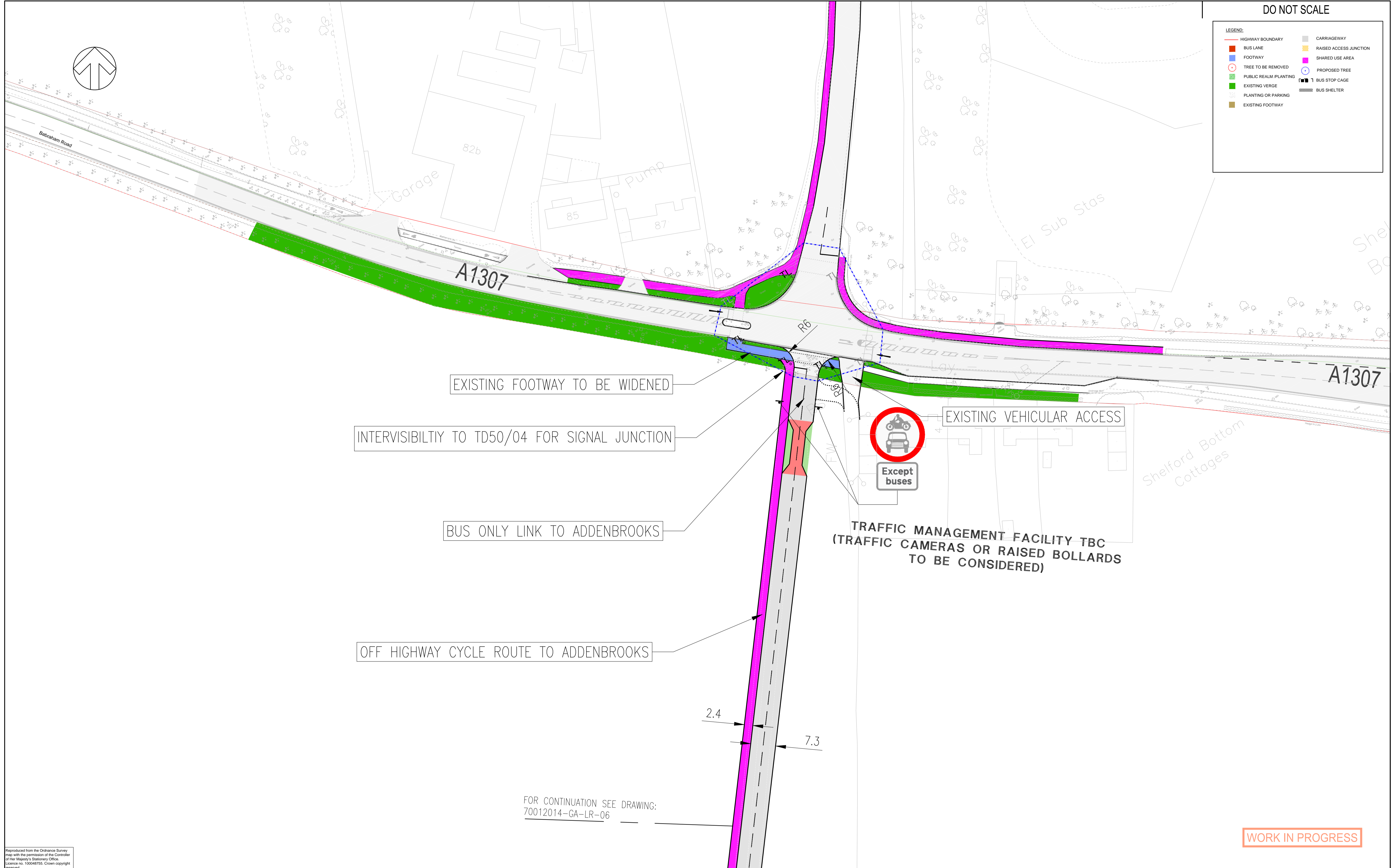
© WSP Group Ltd

L:\70012014 - HAVERHILL CORRIDOR\E MODELS AND DRAWINGS\DEVELOPMENT\AUTOCAD\GA GENERAL ARRANGEMENT\2014-GA-LR-02.DWG 23/11/2016 13:53:01 Malecki, Artur

DO NOT SCALE

LEGEND:

	HIGHWAY BOUNDARY		CARRIAGEWAY
	BUS LANE		RAISED ACCESS JUNCTION
	FOOTWAY		SHARED USE AREA
	TREE TO BE REMOVED		PROPOSED TREE
	PUBLIC REALM PLANTING		BUS STOP CAGE
	EXISTING VERGE		BUS SHELTER
	PLANTING OR PARKING		
	EXISTING FOOTWAY		



EXISTING FOOTWAY TO BE WIDENED

INTERVISIBILITY TO TD50/04 FOR SIGNAL JUNCTION

BUS ONLY LINK TO ADDENBROOKS

OFF HIGHWAY CYCLE ROUTE TO ADDENBROOKS

EXISTING VEHICULAR ACCESS

TRAFFIC MANAGEMENT FACILITY TBC
(TRAFFIC CAMERAS OR RAISED BOLLARDS TO BE CONSIDERED)

2.4
7.3

FOR CONTINUATION SEE DRAWING:
70012014-GA-LR-06

WORK IN PROGRESS

Reproduced from the Ordnance Survey map with the permission of the Controller of Her Majesty's Stationery Office. Licence no. 100048755. Crown copyright reserved.

REV	DATE	BY	FIRST ISSUE	CHK	APD
A	18/11/2016	MW	FIRST ISSUE	AKM	SR
DRAWING STATUS: FOR INFORMATION ONLY					

WSP | PARSONS BRINCKERHOFF

66-68 Hills Road, Cambridge CB2 1LA
Tel: +44 (0)1223 558 050 Fax: +44 (0)1223 558 051
www.wspgroup.com www.pbworld.com

CLIENT: **Cambridgeshire County Council**

ARCHITECT:

PROJECT: **A1307 HAVERHILL TO CAMBRIDGE CORRIDOR STUDY SUSTAINABLE TRANSPORT IMPROVEMENTS**

TITLE: **PROPOSED IMPROVEMENTS OFF HIGHWAY SECTION SHEET 1 OF 6**

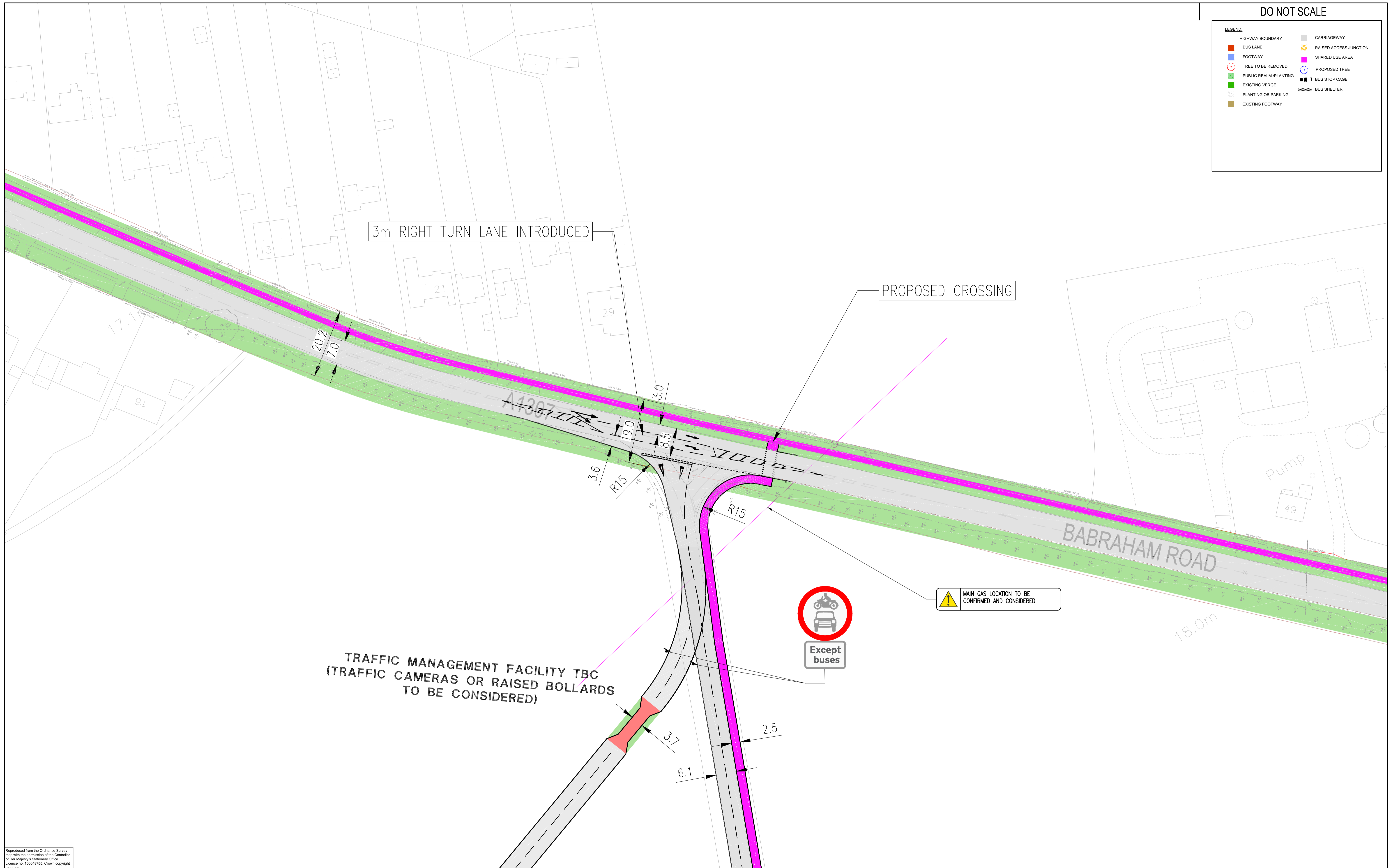
SCALE @ A1: 1:500	CHECKED: AKM	APPROVED: SR
CAD FILE: 2014-GA-LR-02.DWG	DESIGN/DRAWN: MW	DATE: November 16
PROJECT No: 70012014	DRAWING No: 2014-GA-LR-07	REV: A
© WSP Group Ltd		

L:\70012014 - HAVERHILL CORRIDOR\E MODELS AND DRAWINGS\DEVELOPMENT\AUTOCAD\GA GENERAL ARRANGEMENT\2014-GA-LR-02.DWG 23/11/2016 13:53:40 Malecki, Artur

DO NOT SCALE

LEGEND:

	HIGHWAY BOUNDARY		CARRIAGEWAY
	BUS LANE		RAISED ACCESS JUNCTION
	FOOTWAY		SHARED USE AREA
	TREE TO BE REMOVED		PROPOSED TREE
	PUBLIC REALM (PLANTING)		BUS STOP CAGE
	EXISTING VERGE		BUS SHELTER
	PLANTING OR PARKING		
	EXISTING FOOTWAY		



L:\70012014 - HAVERHILL CORRIDOR\E MODELS AND DRAWINGS\DEVELOPMENT\AUTOCAD\GA GENERAL ARRANGEMENT\2014-GA-LR-02.DWG 23/11/2016 13:54:16 Malecki, Artur

Reproduced from the Ordnance Survey map with the permission of the Controller of Her Majesty's Stationery Office. Licence no. 100048755. Crown copyright reserved.

TRAFFIC MANAGEMENT FACILITY TBC
(TRAFFIC CAMERAS OR RAISED BOLLARDS
TO BE CONSIDERED)



MAIN GAS LOCATION TO BE
CONFIRMED AND CONSIDERED

REV	DATE	BY	FIRST ISSUE	CHK	APD
A	18/11/2016	MW	FIRST ISSUE	AKM	SR
DRAWING STATUS: FOR INFORMATION ONLY					

WSP | **PARSONS BRINCKERHOFF**

66-68 Hills Road, Cambridge CB2 1LA
Tel: +44 (0)1223 558 050 Fax: +44 (0)1223 558 051
www.wspgroup.com www.pbworld.com

CLIENT: Cambridgeshire County Council

ARCHITECT:

PROJECT: A1307 HAVERHILL TO CAMBRIDGE CORRIDOR STUDY SUSTAINABLE TRANSPORT IMPROVEMENTS

TITLE: PROPOSED IMPROVEMENTS OFF HIGHWAY SECTION GRANHAM'S JUNCTION WIDENING SHEET 9 OF 9

SCALE @ A1: 1:500	CHECKED: AKM	APPROVED: SR
CAD FILE: 2014-GA-LR-02.DWG	DESIGN/DRAWN: MW	DATE: November 16
PROJECT No: 70012014	DRAWING No: 2014-GA-LR-08	REV: A
© WSP Group Ltd		