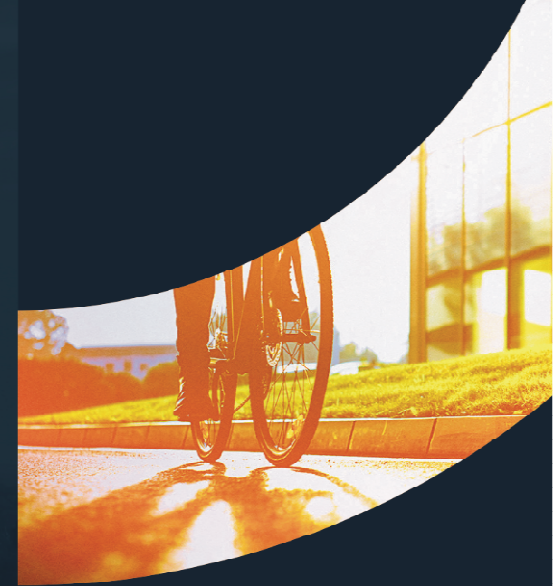




**GREATER
CAMBRIDGE
PARTNERSHIP**

Growing and sharing prosperity

— Delivering our City Deal —



Future Visions: overview of GCP plans and proposals

Peter Blake, GCP



Delivering a world class transport network for Greater Cambridge

From
2011
to
2031



Jobs

+44,000
jobs



If everyone
travelled as
they do now

+26,000
daily car journeys

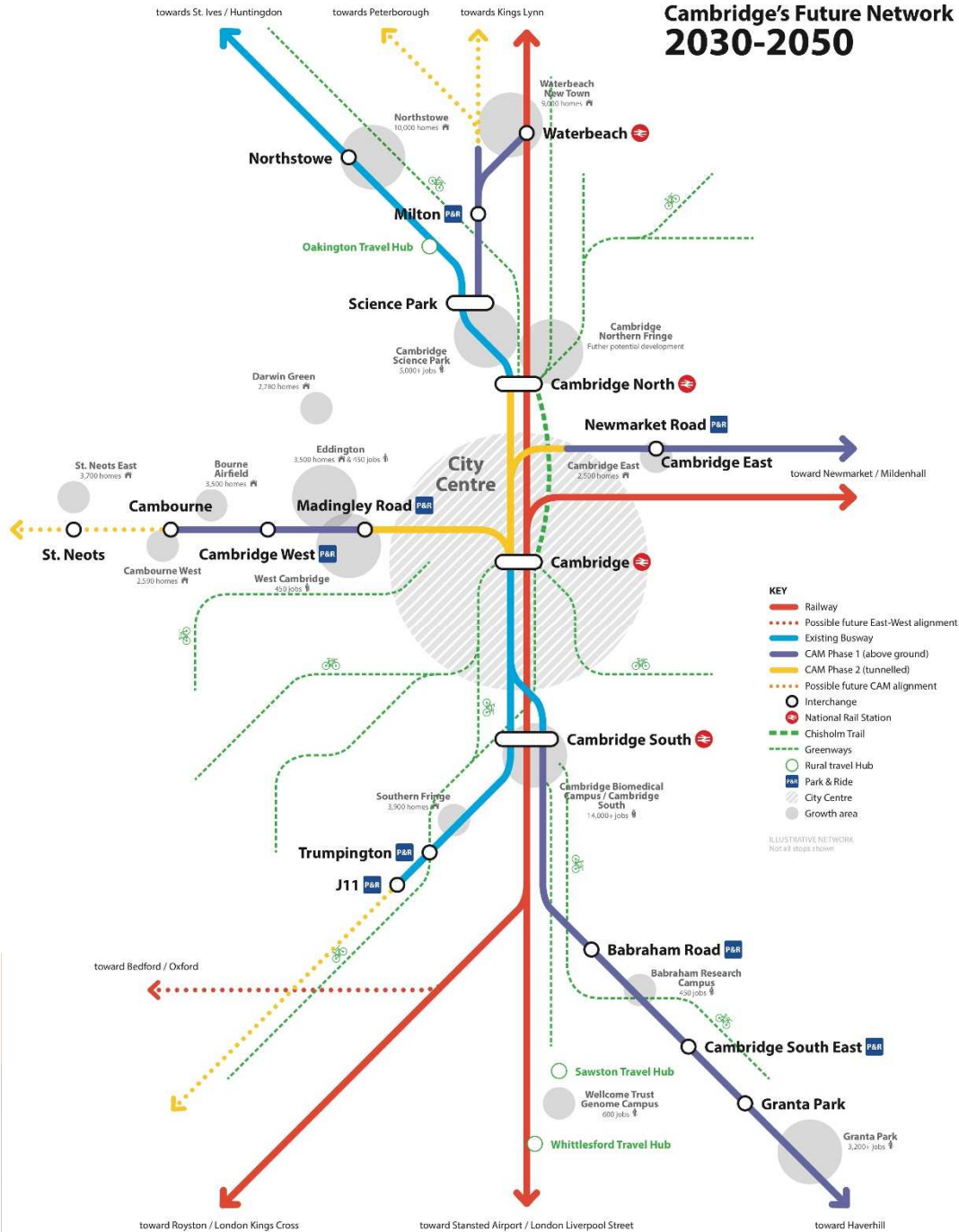
We need to double
public transport
capacity



- Travel choices are currently limited for many people
- Need to offer more people a competitive alternative to travelling by car
- This means making significant improvements to public transport, cycling and walking



Cambridge's Future Network 2030-2050

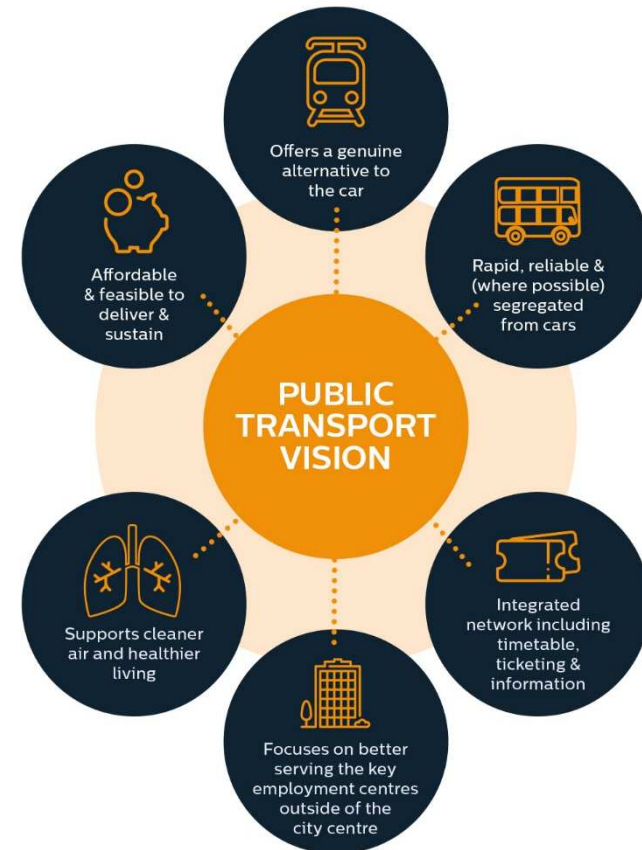


Public transport investment - infrastructure

GREATER CAMBRIDGE PARTNERSHIP
 Growing and sharing prosperity
 Delivering our City Deal

The Sustainable Transport Offer...

- Providing a genuinely competitive alternative to the car
- Faster, frequent, more reliable services between residential and employment areas
- Review fares options to make journeys more affordable – young people
- Step change of investment in cycling and walking, including maintenance and parking
- Investment in technology; real time information, traffic management systems
- Development of major infrastructure; CAM, Cambridge South Station etc.





How can we deliver this?

- We need to create space for more sustainable transport, buses, walking & cycling
- We need to deliver a transformed public transport network that offers a more attractive journey than the car
- The City Deal gives us a once in a generation opportunity to fund the public transport improvements first – offering people choice



GCP Board – principles for the future

- Tackle both congestion and air pollution now and in the future, and supporting a reduction in carbon emissions locally
- Significantly improve access for people travelling into and around Greater Cambridge for regular journeys, supporting the economy and creating better journeys for our communities
- Encourage behaviour change to reduce car journeys and emissions, in particular for people to make more journeys using public transport, cycling and walking
- Be fair and equitable to both those travelling to Greater Cambridge from further away, as well as to those residing within the City and South Cambridgeshire

